



**BLUE RIDGE
PARKWAY
FOUNDATION**

2020-2021 ANNUAL REPORT

OUR MISSION

We are the non-profit fundraising partner for the Blue Ridge Parkway, providing support for initiatives along the 469-mile route, including natural resource protection, historical and cultural preservation, visitor amenities, and education and outreach.

Board of Trustees

Alfred G. Adams, <i>Chair</i>	Bob Lassiter
John Mitchell, <i>Vice Chair</i>	Julie H. Moore
Jim McDowell, <i>Treasurer</i>	Jim Newlin
Jennifer Zuckerman, <i>Secretary</i>	Tanya Marie Pender
Paul Bonesteel	Rebecca Reeve
Whitney Brown	Jerry Starnes
Billie Brandon Howell	Bob Stout
Craig Lancaster	Cynthia Evans Tessien

Council of Advisors

Greg Andeck	Brian Gulden
Becky Anderson	Wake Hamilton
Jim Barber	Charles Higgins
Anne Barnes	Sean Higgins
Jack Betts	Michael Hobbs
W. Louis Bisette, Jr.	David Holt
Philip Blumenthal	Raymond Hornak
Greg Brown, Ph.D.	Olson Huff, M.D.
Tommy Cabe	George Kegley
Hobie Cawood	Phil Noblitt
Bob Clark	Bob Shepherd
Pat Shore Clark	Gary Stewart
Heather Cotton	Kent Tarbutton
Harvey Durham, Ph.D.	Morgan Tarbutton
Joe Epley	Anne Mitchell
Broaddus Fitzpatrick	Whisnant, Ph.D.
Jane George	Richard T. "Stick" Williams
Donald H. Gest	Brad Wilson
Peter Givens	

Staff

Carolyn Ward, Ph.D. <i>Chief Executive Officer</i>	Blue Ridge Music Center Program
Kevin Brandt <i>Project Manager</i>	Richard Emmett <i>Program Director</i>
Jordan Calaway <i>Chief Development Officer</i>	Marianne Kovatch <i>Associate Program Director</i>
George Ivey <i>N.C. Development Director</i>	Holli Harris <i>Partner Ranger</i>
Audrey Pearson <i>Va. Development Director</i>	Kids in Parks Program
Rebecca Barnhardt <i>Database Manager</i>	Jason Urroz <i>Program Director</i>
Elizabeth Hickman <i>Finance & Administrative Director</i>	Adam Rodes <i>Associate Program Director</i>
Rita Larkin <i>Communications Director</i>	Allison Royal <i>Graphic Design & Outreach Coordinator</i>
Jacob LeBlanc <i>Communications & Graphic Design Manager</i>	Erin Voss <i>Data Manager</i>

We are sorry to have lost a stalwart supporter of the Blue Ridge Parkway and Advisor, Dan Donahue, in 2021.

717 S. Marshall St., Suite 105B, Winston-Salem, N.C. 27101

(866) 308-2773

Additional offices in Asheville, Galax, and Roanoke.

During the last two years, you proved something we at the Foundation always knew to be true: your bond with the Blue Ridge Parkway is unbreakable.

Despite the hardships caused by the pandemic, you embraced your park. You explored its natural splendor. You rediscovered its history. You uplifted efforts to make it a better place for all.

This year marked many milestones made possible by your devotion. Following years of planning and fundraising, exterior renovations transformed Flat Top Manor from dire to dazzling. Thanks to you, Parkway travelers from near and far enjoyed home-style meals at The Bluffs Restaurant for the first time since its closure more than a decade ago. Visitors connected to the stories and science of the park through displays remembering Camp Catawba and exhibits illuminating the unique ecosystem at Waterrock Knob.

The Blue Ridge Music Center rebounded to once again offer a full season of live concerts with a newly installed speaker array, present daily Midday Mountain Music, and reopen the Roots of American Music Museum. Our signature Kids in Parks program surpassed one million adventures on its family-friendly TRACK Trails and expanded into additional states.

We are grateful to the volunteers who contributed more than 3,000 hours of their time to enhance the Parkway, from sprucing up the landscape to entertaining visitors at the Blue Ridge Music Center.

These successes, and so many more, are only possible because of your deep connection with the Parkway. We are humbled by your ongoing generosity and dedication to this extraordinary corner of our world. We can't wait to celebrate the Foundation's 25th anniversary with you in 2022, and continue the important work you make possible.



Carolyn Ward
Chief Executive Officer

Here we are, at the end of 2021 – a year of unimaginable challenge and change, and also of hope.

Just like in 2020, people came to the Blue Ridge Parkway for many reasons. Some came to find solace amid the chaos, or to reconnect with loved ones outdoors. Others came for inspiration, recreation, or contemplation. Some came for their 100th visit, while others visited for the very first time.

As I joined the Parkway this summer, I traveled the full 469 miles with new eyes. Around every turn is an example of greatness. Park staff, partners, and volunteers are getting creative, solving a wide range of challenges in navigating COVID protocols while providing amazing visitor experiences during a period of heavy visitation. We are also mobilizing for significant infrastructure investments along the motor road and digging into our strategic priorities. We are responding to storms and saving lives, protecting resources, and telling important stories. Quite simply, together we are ensuring that the visitor experience happens, and protecting the place that supports it.

I remain deeply grateful to the Blue Ridge Parkway Foundation for its support. Through its hard work, and the generous spirit of our shared stewards, places that were once overgrown now provide vistas to protected lands, and restaurant windows that were once shuttered are again open to the smell of fresh coffee and excited conversations about the day's planned adventures. Accomplishments this year include serving the next generation of diverse park stewards with the Tanawha Trail Crew work, overhauling the sound system at the Music Center, and ensuring tribal engagement on the development of new exhibits at Waterrock Knob Visitor Center. These are the investments that will sustain the Parkway as a place of meaning for generations to come.



Tracy Swartout
*Superintendent
Blue Ridge Parkway*

PRESERVING HISTORY & CULTURE

The Blue Ridge Parkway weaves the narrative of history into our modern-day lives. This national park unit showcases the experiences of those who came before us and the special places that embody stories of the past. By offering engaging ways to discover our history, we can ensure that traditions and tales endure for generations to come.

PROJECT COMPLETE

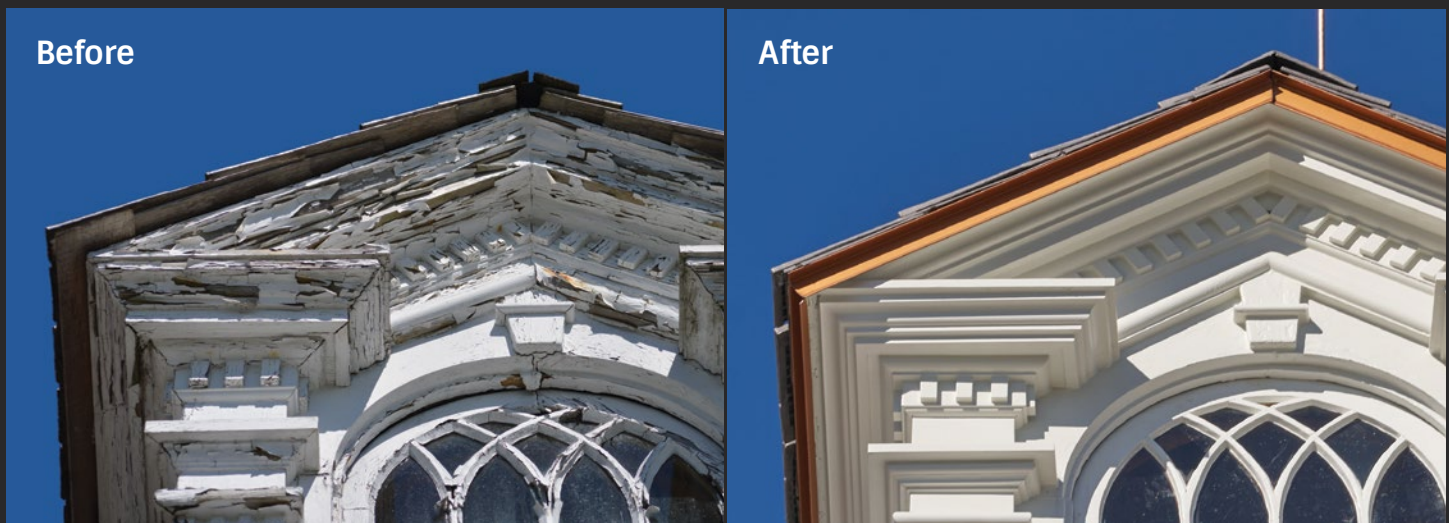
Exterior Restored at Flat Top Manor!

You've done it. After years of seeing Flat Top Manor's peeling siding and crumbling columns fall further into disrepair, efforts and funding from nearly hundreds donors and the National Park Service (NPS) have accomplished our biggest project yet in restoring the exterior of Moses and Bertha Cone's former home.

Exterior renovations began in late 2020, and after 14 months, the grand 23-room manse gleams from its perch overlooking Bass Lake. To complete the transformation, crews removed columns, balusters, and windows, repairing as many elements as possible and recreating those that could not be saved. Each piece of compromised clapboard siding was replaced before the entire exterior was repainted. The cedar roof shingles were replaced with a

sustainable composite shingle from Enviroshake, and bright copper-colored flashing, a detail that had previously been lost, brings a sparkle back to the building's facade that many have never seen. Even the beadboard ceiling of the spacious porch was refreshed.

Architects from the Denver Service Center, the National Park Service's planning, design, and construction management office, led the restoration work. The center tackles the park system's largest projects including preservation of Mount Rushmore, the Statue of Liberty, and the Wright Brothers Memorial. The NPS hired Ritz Construction, Inc., to lead the onsite effort to complete the restoration. Double Hung, LLC, was responsible for the process of delicately removing all the windows, columns, and





railings. At the company's workshop in Greensboro, N.C., the team meticulously repaired and repainted the features before returning them to their original locations on the building. In all, more than \$2.4 million, and thousands of hours of work, went into restoring this icon of the High Country.

Next year, we'll celebrate the renovation's completion as part of the Foundation's 25th anniversary. We hope you'll stop by to see this Parkway gem, magnificently restored to its former glory. It wouldn't have been possible without you.

Photos by David Huff.



For more photos comparing Flat Top Manor's exterior before and after renovations, scan the QR code or visit BRPFoundation.org/FlatTop.



PROTECTING NATURAL RESOURCES

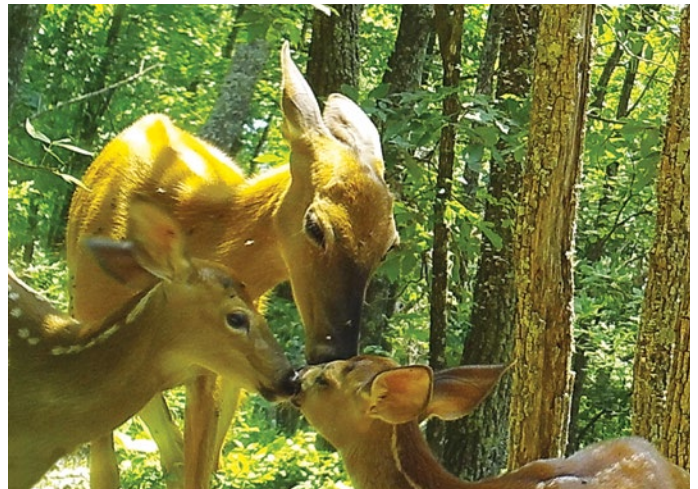
The Blue Ridge Parkway allows us to engage with the natural world in truly meaningful and inspiring ways. Each sweeping view encompasses a staggering diversity of flora and fauna playing critical roles in delicately balanced ecosystems. Your support safeguards this wild and wondrous place.

PROJECT UPDATE

Wildlife Watch

Through your donations, Parkway natural resource staff and volunteers placed motion-activated cameras at approximately 50 sites in the Ridge, Plateau, and Highland districts to capture photographs of wildlife within the park.

Though analysis is ongoing, approximately 20,000 images were collected of 20 species of mammals. These included white-tailed deer (97% of sites), raccoon (78% of sites), opossum (58% of sites), coyote (50% of sites), black bear (49% of sites), gray squirrel, red fox, gray fox, bobcat, groundhog, and eastern cottontail rabbit. The team was excited to find that long-tailed weasels were detected at four camera sites. These voracious predators, which eat a variety of smaller mammals and invertebrates, are fairly common along the Parkway, but rarely seen.



The discoveries went beyond mammals and revealed 12 species of birds including wild turkey, great blue heron, barred owl, red-tailed hawk, red-shouldered hawk, pileated woodpecker, American crow, and wood thrush.

As in years past, the natural resource staff continued to maintain trail cameras at two “bathtub” sites to monitor black bear and other wildlife use. Staff and volunteers have only just begun to review and evaluate the more than 3,000 videos collected this year.

Thank you to the donors and 15 volunteers who contributed more than 350 hours toward this project. Biologists are gaining a greater understanding of wildlife distribution and behavior within the park and finding ways to provide safeguards for the animals and their natural habitats.

*Above: A family of white-tailed deer.
Left: A male wild turkey, or “Tom,” engaging in its spring courtship display, known as strutting.*





Crew member Tiara Atkins at the site of repair work on the Tanawha Trail. Photo by Torri Pelletier/Conservation Legacy

PROJECT COMPLETE

Tanawha Trail Crew

Your gifts in support of the Trails & Views Forever program gave a diverse crew of young adults a step forward in the natural resource industry. Organized by Conservation Corps North Carolina and comprised of five AmeriCorps members of color, the team honed their trail restoration skills through training sessions and made critical repairs along the Tanawha Trail near Julian Price Memorial Park this summer.

The crew spent several weeks building a retaining wall to stabilize the trail, correct safety issues, and preserve the surrounding ecosystem. Because of their successful completion of the four-month program, they are qualified and more competitive candidates for permanent positions with the National Park Service and other land management agencies. The crew also earned trail building credit from McDowell Technical Community College and a S-212 chainsaw certification.

Beyond training, the experience created a sense of community among the members. "It was so cool working with this crew because we are so diverse and from a range of different backgrounds," said crew

co-leader Jordan "Lynx" Brown. "Being around other black people was powerful."

There is a critical need for more diversity in the natural resource industry as a whole. Black employees comprise approximately seven percent of the National Park Service's permanent full-time workforce, significantly less than the 13.4 percent of Blacks in the national population.

Thank you for contributing to this enriching experience for these young conservationists. Creating opportunities for all people to be involved in the protection and enjoyment of public lands is a key aspect of ensuring the future of our treasured outdoor spaces.

The Conservation Corps North Carolina organized the months-long session for the crew. The Blue Ridge Parkway Foundation, the National Park Foundation, and the North Carolina Commission for Volunteerism and Community Service contributed funding to support the members' living stipends and professional development.

EDUCATION & OUTREACH

Through engaging exhibits and family-friendly experiences, the Parkway becomes a place for learning. With new knowledge, visitors gain a deeper sense of responsibility for its care and can participate in a brighter future for the park.

YOUNG STEWARDS

One Million TRACK Trail Adventures

In 2021, Kids in Parks celebrated a major milestone. The national program surpassed one million adventures completed by children on its TRACK Trails found along the Blue Ridge Parkway and in parks across the country, demonstrating its success in inspiring kids to experience the outdoors.

Kids in Parks provides opportunities for children and families to get active in nature with help from printed brochures and online e-Adventures. TRACK Trail guides help children identify trees and birds, seek out animal tracks, and inspect insects, among other enriching exercises. The ease of the hikes and educational materials provide a positive introduction to outdoor activities, even for first-time adventurers.

“It’s wonderful seeing children embrace the outdoors as the place they love to play and learn,” said Kids in Parks Director Jason Urroz. “In turn, they are reaping the health benefits, creating meaningful connections with nature, and becoming budding stewards for the parks and public lands that need their protection.”

A key feature of Kids in Parks is the free prizes children receive each time they log a TRACK Trail adventure online. This year, the program introduced a new prize structure, offering 15 waterproof adventure cards featuring a variety of topics ranging from how to use a compass to learning about fungi, flowers, and rivers. The cards come with a carabiner that allows children to organize them to take on outdoor excursions.

The program features more than 225 TRACK Trail locations across 15 states, Washington, D.C., and the Qualla Boundary, comprising a network of trails where kids and families can hike, bike, canoe, play disc golf, and more, all while learning about the natural, cultural, and historical resources at each site.

To try out e-Adventures, or to find a TRACK Trail near you, visit [KidsinParks.com](https://www.kidsinparks.com).



A Park Ranger leads kids in TRACK Trail activities.

PROJECT COMPLETE

New Exhibits at Waterrock Knob

Did you know that elk can run up to 45 miles per hour? Or, that black bear cubs stay with their mother for 18 months learning to hunt and survive?

Thanks to your gifts, new exhibits are now sharing these fascinating facts, and more, with visitors at the Waterrock Knob Visitor Center at milepost 451. The attractive panels and displays installed in September are replacements for time-worn, outdated, and, in some cases, makeshift displays that previously populated the space.

A new 12-foot mural illustrates a multi-seasonal peek at unique flora and fauna of this high elevation environment, as well as the surrounding geological features. Another panel tells the Cherokee story of “How the World was Made,” which describes the buzzard creating the peaks and valleys with its wings, in both Cherokee syllabary and English.



New exhibits replaced the aging & outdated displays.

The installations were a collaboration between National Park Service interpretive staff and David Williams of Wingin' It Works, which specializes in exhibits, murals, and scientific illustration. Joe Bistany of BistanyWorks provided fabrication and technical assistance.

The Waterrock Knob Visitor Center is closed for the winter, but the new exhibits will be available to visit again in spring of 2022.



One panel of the new display highlights outdoor activities at Camp Catawba.

CONTINUING EDUCATION

Camp Catawba Display

This past October, the Foundation and the Blue Ridge Conservancy unveiled new displays at the Middle Fork Greenway in Blowing Rock, N.C. The signage commemorates Camp Catawba and the work of its director, Dr. Vera Lachmann, a Jewish refugee of Nazi Germany who started and operated it from 1944-1970. In addition to typical outdoor activities, the summer camp for boys was known for its cultural programs. The campers acted in plays, performed in an orchestra, and sang in a choir, led by music director Tui St. George Tucker.

Your support made it possible for us to bring these stories to a larger audience through this project. We hope you'll stop by the trailhead of the Middle Fork Greenway to learn more about the camp, which became part of the Parkway in 1985. An account from author Charles A. Miller about his experiences at the camp, as well as a short video about its history, are available at BRPFoundation.org/CampCatawba.

ENHANCING VISITOR EXPERIENCES

Hiking adventures, live music, and favorite gathering places are just some of the experiences that make up a wonderful Parkway journey. Your support plays a key role in keeping visitors safe, creating great memories, and inspiring a deep connection to this magnificent landscape.

OLD & NEW MEMORIES

The Bluffs is Back!

At long last, The Bluffs Restaurant welcomed diners for its first full season following the extensive renovations completed in 2020. The revamp paved the way for the new operators, Heritage Dining and Events, to serve more than 27,000 guests from May through mid-November. It was no surprise that the classic fried chicken was the most popular item on the menu, with the fried green tomato sandwiches and seasonal berry cobblers receiving rave reviews, too.

But it was clear it wasn't just the food that brought customers back to the former coffee shop that closed in 2010. They came to relive their memories, and to make more with their loved ones. Many were shocked to see just how much the interior of the circa-1949 building matched their recollections.



The restaurant's renovations were made possible by more than 500 individual donors, the State of North Carolina, the Appalachian Regional Commission, and the National Park Service.

The Bluffs is currently closed for the season, but next season's opening date will be announced soon.



FIND YOUR WAY

New Doughton Park Map

Visitors to Doughton Park, the largest recreation area within the Blue Ridge Parkway's boundaries, will be able to learn about the campgrounds, picnic areas, hiking trails, and historical cabins and cemeteries, with a new map to be published this spring. With details about important sites and a map highlighting more than 30 miles of trails, visitors will be better equipped to explore and enjoy this gorgeous 6,300-acre park. Thank you for supporting this project, which brings to life a wealth of information and outdoor opportunities.



APPALACHIAN ROOTS

Rhythm's Return

The Blue Ridge Music Center kicked off the year by hosting the first installment of *A Place in the Band*, an online conference and video series that set the stage for the summer's concert season. The theme, Women in Bluegrass & American Roots Music, highlighted notable female roots musicians and other key contributors to the music industry, and created a platform for discussing women's experiences and substantial roles in the genres.

In May, the Music Center opened on a limited schedule, with all programs and visitor services taking place outside. As COVID-19 statistics improved throughout the summer, the Music Center resumed its normal schedule, with the Interpretive Center welcoming the public back indoors to the Roots of American Music Museum and America's National Park Gift Shop. In total, the center welcomed over 35,000 visitors during the 2021 season, including over 6,500 who attended outdoor amphitheater concerts.

Donations from devoted Music Center fans allowed the venue to replace aging amphitheater speakers with a new array, which made for even more dynamic sound from performers such as Scythian, Amythyst Kiah, Becky Buller Bluegrass Band, Joe Troop Trio, Tuba Skinny, and others.

This year, the National Park Service welcomed Lead Ranger Valerie Glowinski to her new role overseeing

operations. The team's work was also supported by a donor-funded Park Partner Ranger position filled by Holli Harris, who helped with a variety of visitor services. We also must thank the 39 Midday Mountain Musicians and 25 concert volunteers, who provided more than 3,000 hours of service to the national park unit and Blue Ridge Parkway Foundation, as well as the audience members and season pass holders who continue to keep this key aspect of Appalachian history and culture alive.

Above: Nine-time IBMA award-winner Becky Buller performs at the Music Center in Galax, Virginia. Photo by Mike Duncan.

Inside the Music

You can watch recordings of the Women in Bluegrass & American Roots Music interviews and conference. The interviews, hosted by singer-songwriter Laurelyn Dossett, featured guests such as Rhiannon Giddens, Laurie Lewis, Alice Gerrard, and Missy Raines. The conference included a keynote address by acclaimed banjoist, producer, and Grammy nominee Alison Brown, panels, and a virtual concert. To watch, visit the website at BlueRidgeMusicCenter.org/PlaceInTheBand.

VOLUNTEER IMPACT

All of us at the Blue Ridge Parkway Foundation want to send out our thanks to every one of the dedicated volunteers who made the park an even better place to visit this year! It was inspiring to see so many people connect to the park they love in a hands-on way. From sharing mountain tunes and tales at the Blue Ridge Music Center to keeping brochures stocked from end to end, volunteers contributed thousands of hours to the Parkway.

We're looking forward to another successful season in 2022! The Foundation will be hosting volunteer events throughout the park. If you would like a recurring volunteer role, please visit the National Park Service's Volunteers-In-Parks program page at nps.gov/blri/getinvolved.

PROJECT	HOURS
Blue Ridge Music Center Workday	35
Johnson Farm Workday	40
The Bluffs Workday	48
Hydrangea Pruning at Cone Estate	124
Trail Blazers	125
Parkway Travelers	154
Midday Mountain Musicians & Concert Volunteers	3,005
.....	
Total	3,531



*Top: Volunteers at Johnson Farm.
Bottom: Jerry Lotich spreads mulch at the Music Center.*



PREPAREDNESS

CPR & First Aid Training

The Foundation's donor-funded projects range from large undertakings to smaller, but vital, needs for the park. When the National Park Service's Volunteers-In-Parks program required funding for CPR and First Aid training for volunteers, you answered the call. Now, the rangers who assist visitors and protect rare plants at Craggy Gardens are prepared to handle emergencies at the popular pinnacle near Asheville, N.C.

PICK YOUR WAY TO GIVE

We invite you to explore these avenues of giving to sustain the Parkway for current and future generations.

Tribute Gifts

A donation in honor or in memory of a loved one is a meaningful way to celebrate their connection to the Parkway or to commemorate a milestone such as a birthday, anniversary, or wedding. (See the list of 2020-2021 tribute gifts on page 20.)

Monthly Giving

As a Parkway Protector, you can support the Foundation's work year-round by making an automated monthly credit card payment of \$5 or more. (See the list of Parkway Protectors on page 24.)

Beneficiary Designations

By naming the Foundation as a beneficiary in your will, 401(k), IRA, or life insurance policy, you will create an enduring legacy that protects the Parkway for many years to come.

Sample bequest language:

"I, [name], of [city, state, ZIP], give, devise, and bequeath to the Blue Ridge Parkway Foundation (Tax ID: 31-1512730), [written amount or percentage of the estate or description of property] for its unrestricted use and purpose."

Beneficiary information for IRAs, 401(k)s, and insurance policies:

Blue Ridge Parkway Foundation
717 S. Marshall St., Suite 105B
Winston-Salem, NC 27101
Tax ID: 31-1512730



Starry Campion. Photo by A. Armstrong, courtesy of the National Park Service/Blue Ridge Parkway.

Workplace Giving



Contact your participating human resources office to give to the Foundation through EarthShare's Workplace Giving, the Combined Federal Campaign, Commonwealth of Virginia Campaign, or the N.C. State Employees Combined Campaign (#1121). Some companies will match employee gifts. Ask your employer for information or visit doublethedonation.com/brpfoundation.

Additional Opportunities

For more ways to give, including Donor Advised Funds, IRA Qualified Charitable Distributions (QCDs), and gifts of stock, contact development officers Jordan Calaway (jcalaway@brpfoundation.org) or George Ivey (givey@brpfoundation.org).

Give Now!

To make a gift right away, scan the QR code or visit BRPFoundation.org/donate.

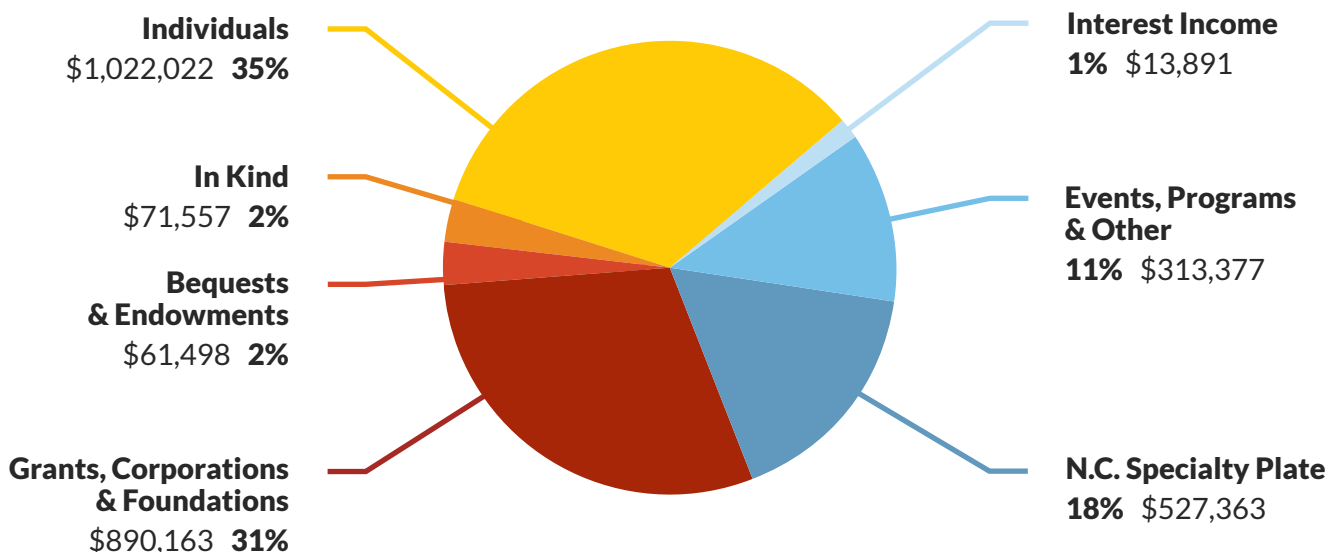


FINANCIALS

PUBLIC SUPPORT & REVENUE	2020	2019
Contributions	\$1,114,225	\$1,078,496
Grants	\$852,897	\$293,180
In Kind	\$71,557	\$109,082
N.C. Specialty Plate	\$527,363	\$524,677
Endowment Income	\$6,561	\$7,857
Interest Income	\$13,891	\$9,464
Other	\$313,377	\$176,880
Support	\$2,899,871	\$2,199,636
Net Gains (Losses) Investments	(\$60,234)	\$242,215
Total Support & Revenue	\$2,839,637	\$2,441,851

EXPENSES	2020	2019
Program Services	\$2,093,583	\$1,992,601
Management & General	\$114,115	\$154,430
Fundraising	\$322,549	\$350,086
Total Expenses	\$2,530,247	\$2,497,117
Change in Net Assets	\$309,390	(\$55,266)
Net Assets at Beginning of Year	\$4,981,518	\$5,036,784
Net Assets at End of Year	\$5,290,908	\$4,981,518

Support: \$2,899,871



Financial information is derived from the Blue Ridge Parkway Foundation's 2020 financial statements, audited by an independent registered public accounting firm, and is available on our IRS Form 990 and at BRPfoundation.org/financials.

COMMUNITY OF STEWARDS

The Blue Ridge Parkway Foundation is thankful for the individuals, businesses, foundations, and partners who contribute to the safekeeping of the Blue Ridge Parkway. Donors who contributed \$250 or more between January 1 and December 31, 2020, are acknowledged on the following pages. They form a Community of Stewards that is committed to preserving and protecting the scenic route today and forever.

Foundations

AmazonSmile Foundation
Anonymous Trust
George T. Baker Foundation
Bank of America Charitable Foundation
Stephen M. Bailey & Lucia H. Bailey Family Foundation
William S. Barnickel Foundation
Patricia E. & John D. Bassett III Foundation
Frederick Bliss Foundation
Blue Cross and Blue Shield of North Carolina Foundation
BlueCross BlueShield of South Carolina Foundation
Blue Ridge Electric Membership Corp Foundation
Blumenthal Foundation
Brady Foundation
E. & E. Chanlett Fund of the Triangle Community Foundation
Community Foundation of Greater Greensboro
Community Foundation of Western North Carolina
Community Foundation of Western Virginia
Considering Animals Fund
John Crosland III Charitable Foundation
Dillon Family Foundation
Dogwood Health Trust
Garrett Family Ever Forward Foundation
George Foundation
Hanna Foundation
The Elton M. Hyder Foundation
Jewish Foundation of Greensboro
Kathleen Kennedy Foundation
Kulynych Family Foundation I, Inc.
Kulynych Family Foundation II, Inc.
The Ebert LeBlanc Family Foundation

Longleaf Foundation
Morningstar Foundation
National Park Foundation
Carol B. Phelon Foundation
R & M Foundation
RCL Fund of The Greater Cincinnati Foundation
Storey Family Charitable Gift Fund
Surtman Foundation
Williams Family Foundation
Willow Branch Foundation
Winston-Salem Foundation

Businesses

Accenture
America's National Parks
Appalachian Mountain Brewery
Attractions Print
Banner Elk Sports
Barringer Construction
Bhramari Brewing Co.
Biltmore Company
Catawba Brewing
Chetola Resort at Blowing Rock
Cisco
Clemens Welding & Machine Shop, Inc.
Cone Health
Delaware North - Peaks of Otter Lodge
Double Wood Farm
Duke Energy
Eurosport Asheville
First Citizens Bank
J. Scott Graham Photography
Hemlock Inn
Mast General Store
MoosePacks
Mountaineer Inn & Log Cabins
Murphy's Naturals
New River Trail Cabins
Parkway Brewing Company
Patagonia, Inc.

T. Pennington Art Gallery, Inc.
Premier Images
Providence Methodist Church
The Ramkat
River Ridge Land & Cattle Company
The Rosemyr Corporation
Sierra Nevada Brewing Co.
SkyLine/SkyBest
Skyline National Bank
The Speckled Trout
Target
TIAA
Triad City Beat
The Law Offices of Timothy D. Welborn
Well-Spring Life Plan Community
Westglow Resort & Spa
Wicked Weed
Wild Bearings
Winston-Salem Journal
WLA Trucking

Community Partners

88.5 WFDD Public Radio for the Piedmont
Appalachian Regional Commission
Blowing Rock Chamber of Commerce
Blowing Rock Charity Horse Show
Blowing Rock Tourism Development Authority
Blue Ridge Conservancy
Blue Ridge Hiking Club
Blue Ridge National Heritage Area
Blue Ridge Parkway Association
Boone & Watauga County TDAs
Buncombe County

Conservation Trust for North Carolina
The Crooked Road
EarthShare of North Carolina
Garden Club of Weaverville
Grayson County
Henderson County TDA
National Council for Traditional Arts
National Endowment for the Arts
NC Division of Motor Vehicles
Pathways to Parks
Vehicles For Charity
Visit Winston-Salem
Yadkin Arts Council

Endowments

James Erwin Asbury and Nesbitte Samuel Asbury Memorial Endowment
James L. and Pat Shore Clark
Elspeth and James McClure Clarke
Alan and Sally Cone
Bud and Brenda Hilton
Imerys/K-T Clay Company
Petro Kulynych
Houck and K.B. Medford
Judy and Bill Watson
O. Bliss and Susan Williams
Bland and Ada Worley
ZAP Fitness

Individual Giving

\$10,000+
Anonymous
Hal & Beth Carson
Pat Shore Clark
Munroe & Becky Cobey
David Memory
Ken Nelson & Julie Hettiger

Blue Ridge Parkway Foundation

Ken & Donna Lewis
NC BRPF license plate holders
Marcus Simpson & Marilyn
Westphal
Fred & Alice Stanback
Estate of Martin Vaughn, Jr.

\$2,500-\$9,999

Anonymous
Alfred & Beth Adams
Dale Allison
Aubrey Arrington
Mary Baldwin
Anne-Corinne Beaver & Mike
Mola
Mike & Clarkie Brown
David & Teresa Campbell
Michael & Lori Constantino
Amret & Wesley Hawfield
Billie Brandon Howell
Sarah & Tramm Hudson
Susan & David Jamison
Scott & Deanna Lampe
Karl and Lynn Legatski Family
Estate of Mary Roberta Linn
Michael & Rebecca McCracken
Steve McSwain
Mr. & Mrs. Dyke Messinger
Leslie Paul
Dave & Julia Ralston
James Stephens & Ann Berry
William & Cathy Stone
Bob & Janet Stout
Ronald Swenson
Bill & Cynthia Tessien
Terri Waller
Kirby & Gloria Werninck
Walter & Jean Wilkinson
Laura & Grant Williard
John Willingham
Dr. Eric Wilsnack
Bruce & Luci Wright

\$1,000-\$2,499

Anonymous
Bridgett Aguirre
Norman & Linda Aldridge
Mary Allen
Connie Amburn
Ed Anderson
Chip & Judy Anderson
Becky Anderson
Bernard & Holly Arghiere
Richard & Elizabeth Aronson
Baptist Emergency Department
Staff
Jim & Linda Barber
Peter & Jean Anne Barnes
Bill & Laura Barrier
Beth Bartholomew & Susan
Hurrell

Larry Beamer & Deborah
Haynes
Jack & Martha Betts
Martha Brame
Susan & Peter Brockway
Mark Buff
The Capps Family
Brian Carlton & Elizabeth
Sumpter
David & Peggy Carr
David Carter
W. Lee Carter III
Ken & Christine Castelleo
Daniel & Lin Celoni
John & Gina Cocklereece
Gay Coleman
Janet Cone & Larry Imeson
Robert & Kathleen Connelly
John & Faye Cooper
Ted & Marty Couch
Martin & Ginger Curry
Charles & Shannon Davis
H. Leigh & Jennie Derby
P.K. & Ron Donson
Elyn & Michael Dortch
Bob Drennan
Joseph & Virginia Dulaney
Mitchell & Polly Dunn
Susan & Harvey Durham
Edward Emery
Jerry & Janet Enos
Mark & LaVonda Everhart
Anne Farmer
Thomas Fisher III
Douglas Flint
John & Janet Garrett
Sabrina Gibson
Wes Greene
LaGena & Daniel Greene
Larry & Barbara Griswold
Neal & Jewel Hamlett
Karen Hammett
Karen Harding
Susan & David Hart
Carolyn Hart & Sandy Godwin
Charles & Susan Hauser
Lynda Healy-Rejkowski & Don
Rejkowski
Jo Hennelly
David Herbert
Chris & Debbie Herbert
Lauren Hilan
Tim & Carolyn Hilton
Daniel Hilton
Susanne Hite
Rick Hodgins
Steve & Bridget Holcombe
Jack & Morgan Horner
Richard Ikenberry
Joe & Gayle Intag
Thorunn Ivey
Steve Johgart

Maxine Johnson
Philip T. Johnson, DVM
Sam Johnson
Robert Jones
George Kegley
Mary C. Kilpatrick
John Koenig
Keith & Kelly Koenig
George & Kristy Lampe
Bob & Jane Lassiter
Jane Ledbetter
Donald Lendle
David & Susan Lennox
William & Susan Leonard
Justin & Deborah Little
Buck & Maria Little
Bob Livingston
Joseph P. Logan
Cathy Logue
Kim Long
Rick Lotz
Joseph & Lu Ann Love
Les & Catherine Love
J. David & Doris Asbury
Luening
Anita H. Lupo
William & Nina Maddux
Pat Mauldin
Emi & Gibson McCall
John & Marcia McCarley
Lisa & Andrew McDougald
Ed & Rebecca McKee
Anthony & Patricia McLean
William & Monica McSwain
Mehl, Boteler & Almand
Families
Rob & Roey Mendel
Robert & Cama Merritt
Lee H. Minor
Donna Mitchell
David & Julie Moore
Julie H. Moore
Maureen & David Moses
Arnold & Rosemary Nelson
Jim Newlin & Silvie Granatelli
Judy Newton Scurry
Jane & Tom Olsen
Adam & Connie Ortiz
Eric & Diane Overcash
Jeanne Patterson
Larry Pearce
Clifford & Bobbie Phillips
Linda Phillips
Chuck & Dini Pickering
Mary Ann Poole
Woody & Bobbi Poor
Christopher Puin
Teri & Tony Puleo
Bebe Purcell
Barbara Quickel
David & Ann Raper
Robby & Kim Ray

Jerry & Beth Redmond
John Rendleman
John & Maria Rich
Pete & Kay Ritcher
Ann Robertson
John & Jill Rose
Tom & Susan Ross
Lori & Tim Rowe
Joseph & Nancy Roy
Walter & Sally Rugaber
Becca Sadri
Mark Schuler
Edward Scott
Charles & Deatra Sellers
Daniel & Megan Shank
Raleigh & Katy Shoemaker
Stuart & Teresa Singer
Witold & Shirley Siwanowicz
Kelly & Linda Skillett
Sherwood & Eve Smith
Walt & Sharon Smoski
George & Michelle Snead
James Srebro, MD
Myles Standish & Shelley Crisp
Thomas Statnick
Richard & Debbie Stevens
Ray Stone
James & Kimberly Strong
Margaret & C.L. "Curly" Stumb
Mimi & Brian Sturgell
Richard & Debbie Swartzel
Kent & Shelley Tarbutton
Philip & Virginia Thomas
Karen & Steve Thompson
Arlene Edwards Thompson
Sterling Vestal
Edward Walker
Bill & Judy Watson
Jim & Paula Weant
H. Thomas Webb & Kathryn
Heath
Larry Weigel & Jayne Anderson
Carol Westmoreland
J. Tracy & Barbara Wilkerson
Rob Willis
Tom & Candy Wood
Paul & Marilynn Woodall
Michael & Linda Zagorac
Steve & Nancy Zuk

\$500-\$999

Anonymous
Ricky & Sharon Adkins
Ross Allen
Larry Ammons
Paul Anderson
Lety Atieh
Lisa Austin
George & Grace Auten
James Beach
Jimmy Bent
Teresa Blanc

Raymond & Mary Boardman
Joseph M. Brantley III
Amy & Robert Brinkley
Dan & Linda Brown
W. Edward & Cheryl Brown
Adrian Brown & Keith Flynn
Lou & Andrea Bruns
Beverly & David Brunson
Ken & Charlotte Bryant
R. Andrew Burgin
Jean Bushyhead
Hobie & Addie-Lou Cawood
Kerr, Tori, Will & Robert Collins
Cam Collins & Jane Bramham
Ceasar & Bettie Cone
Roy Crouse
Allison & Ryan Danell
Terry Davis & Gail Hyde
Glenn DeGeorge
Bill & Penny Dickason
Dan & Kay Donahue
John Dowd & Laura Crumpler
Malcolm & Susan Duncan
Steve & Janet Edwards
Bill & Diane Elliot
Miles & Millicent Elmore
Joe & Dorcas Epley
Elizabeth Fenwick
Sue Fernbach & James
Rishebarger
Margaret & Mac Foster
Connie & Alan Fruehan
Gene Gluchowski
Claude & Elizabeth Grasperge
Tim Gupton & Brent Moore
Juliana Henderson
Roger & Kate Henry
Marcus H. Hester
Kevin Heuer & Leigh-Ann Laney
Richard & Mary Hill
Ed & Jane Isbey
Robert & Elizabeth Iwaoka
Allen Jelks
Gary & Sandy Johnson
Sarah Johnson
Frederic & Pam Kahl
Philip & Louise Kinken
Jacob & Angela Kirkman
Donald & Sandra Leslie
David Lewis
Raymond & Jodi Lockwood
Ann Long
Beth Lotspeich
Tommy & Sherry Lott
Chase Luddeke
Lucinda Lundy
David Lyles
David Lynch
Amir Malek
Billy Marion
Alice Matthews
Dr. & Mrs. Kenneth Maxwell

A.J. & Barbara McClure
Mike & Donna McNeil
Paul & Marcia Meis
Ronald Melton
Jerri Meredith
Deb & Charles Miller
James & Donna Minton

David Moore
Mike Moyer
David Myers
Cindy & Jerry Nelson
Peter & Kelley Newsome
John & Lynda Nolan
Robert Palmer

John & Lynette Parker
Cynthia Parks
Mac Parrott
Betty & William Patton
Caroline Peck
Wilmer Perry
Evelyn Phipps & Charles Earp

The André Michaux Society



THE ANDRÉ
MICHAUX
Society

With a planned gift, you become a member of The André Michaux Society, which honors the French botanist and explorer who enlightened others about the natural wonders of the Blue Ridge Mountains. Members receive a personalized certificate recognizing their dedication to the Blue Ridge Parkway. Donors who have passed away are noted with an asterisk.*

Alfred & Beth Adams
Becky Anderson
Neal & Patrice Auspitz
William Barr*
Ed Blair
Connie Boylan*
Dan & Linda Brown
Chip Callaway
Rodney & Debra Clark
Calvin & Gail Clayton
Mabel Clark Corpening*
Andrew & Janice
Cwalina
Robert & Nancy DeHart
George & Sandra Fisher
Catherine Frampton*
Roy M. Gallagher, Jr.*
Mark & Marge Hoecker
Thorunn Ivey
Mark James

Hana & Milo Karpisek
Sarah Kinnear*
Karl & Edwina Kleeman
Tom & Darlene Knight
John Koenig
Mary Roberta Linn*
Jack & Barbara Lockhart
Kim Long
Greg Madison
A.J. & Barbara McClure
Greg McKnight
Nicholas Moore
Arnold & Rosemary
Nelson
Linda & Mark Pasche
Howard Pearson*
Bob & Rebecca
Schwartz
Bernadette Scott
Anne Seawell

Miriam Sexton
Mary Shuford*
Gary & Lisa Stewart
Helen Fenneman
Stocksdale*
John & Marellen
Struhar
Julie & Les Taylor
Tim Thomas
Jim & Pat Toole
Vicki Troutman
& Mary Tucker
Martin Vaughn, Jr.*
Bill & Judy Watson
Cliff Watts
Valeria Watts*
Pam Westrick
Martha Yount*

If you have already named the Blue Ridge Parkway Foundation in your estate plan, please let us know, so we can officially welcome you to the group and send you a token of our appreciation. Contact Jordan Calaway at jcalaway@brpfoundation.org or (866) 308-2773, ext. 245.



“Spending 12 of my 36-year career with the National Park Service working on the Parkway has provided me with a wonderful perspective on this special place. And while its rich diversity challenges the imagination and brightens the day, the NPS with its limited resources struggles to maintain and protect it. Since its inception the Foundation has contributed significantly to the quality of the visitor experience and the protection of this outstanding resource by funding critical projects and programs.”

- Dan Brown, former Blue Ridge Parkway Superintendent & steward

Sarah Plymale
 Kemilou Pomplun
 Carl & Mary Porter
 David & Nancy Poythress
 Ken Randolph
 Missy & Sam Rankin
 Traci & Richard Rate
 Rebecca Reeve
 Chip Register
 Sandy & Tommy Rouse
 Richard & Pam Sebastian
 Perry Simpson
 Laura Smith
 Verner & Anna Stanley
 Gary & Lee Anne Stiffler
 Tom & Ellen Stover
 James & Jacquelyn Taggart
 Julie & Les Taylor
 Jan Waters
 Joachim Weickmann & Tamara Potter
 Deborah & Ken Wilson
 James Wilson
 Emilio & Frances Zeller

\$250-\$499
 Michael Adams
 James & Allene Adams
 Linda Adams
 Nancy & John Aiello
 Suzette & Michel Allen
 Greg Andeck
 Gary Andersen & Donald Jones
 Peter & Jean Anderson
 Paula & David Applegate
 Deb Austin
 Shirley & Jeff Badke
 Thomas & Melissa Bahleda
 Rod & Bess Baird
 Robert & Dianne Baker
 James Barefield
 Michael & Grace Baucom
 Clarence & Carol Beaver
 Cammie Berger
 Alex & Anne Bernhardt
 Robert & Sally Billington
 David Billstrom & Jennifer Caldwell-Billstrom
 David & Lisa Blakewood
 Candace Blanco

Peggy Bogardus
 Robert Bolton, Jr.
 Glenn Boone
 Kerry Bova
 Sarah Boyer
 Josh & Rosemary Bradley
 Barton Brass
 Scott Brewington
 Forest Britt
 Theresa & Billy Brockway
 Bryan Brothers
 George & Loren Brown
 Gregory Brown
 Ann Browning
 Mr. & Mrs. Steven Brueggeman
 Patricia & Jim Butler
 H. Craig & Jacqueline Casey
 Gail & G.W. Catron
 Roger & Martha Charles
 Kia Christopher
 Lynn Clark
 Karen and Michael Cogburn
 Victoria Colebank
 James Coleman
 Betty & Benjamin Cone
 William & Gayle Connor
 Elizabeth Cooke
 Terri Cooper
 Amy & Mike Copley
 Sam Craver
 Roger & Mary Cruser
 Ron & Patti Curtis
 Alene Dale
 Charles & Sara Dassance
 Joan Davenport
 JoAnn Davis
 John & Anne Davis
 Jim & Shelia Deal
 Andrea Debevoise
 Brian DeCann & Pamela McCarrick
 Robert & Nancy DeHart
 Joseph & Nancy DePippo
 Roddy Dixon
 Frances Quay Dortch
 Rod Douglas
 Clara & Jim Duggins
 Dan Dunlop & Scotti Harwood
 Marvin Edwards
 Barry & Linda Elledge
 Richard & Rebecca Embrey
 David & Kathryn Ervin
 Erika Fant & Quinn Lundquist
 Ian Firth
 Broaddus & LuAnn Fitzpatrick
 Virginia Fleck
 Tom & Pilar Fotta
 William Fowler
 Donald & Linda Frey
 Lawrence Friedman
 Terry Ellen Garber
 John Gardiner

Ray & Jane Garland
 Michael & Louise Garvey
 Terry Gentry
 George Georges
 Junko Gilbert
 Russell Gill
 Jennie Glock
 Clarence & Nelda Goings
 Maryellen & Robert Goodlatte
 Amanda & Christopher Goodson
 Maurie Gray
 Judy Greene
 Gordon & Velva Groover
 Leslie Grubb
 Suzanne Guerin
 David & Angela Hamilton
 Kathy & John Harp
 John and Peggy Harwell
 Sandra Hayes
 Peter & Diana Hellebush
 Grant Hellyer & Carl Gibbons
 Alisun & David Henion
 Tom Hensley
 Kay & Rick Herndon
 Bill & Dee Hilt
 Mary Hinkle
 Pam Hollifield & Scott Montgomery
 Mary Anne Howard
 Paul & Susan Hubbard
 Thomas & Victoria Hunt
 Robert Hurt
 Mark James
 George Jamesson
 Kenneth & Norma Jenson
 Charles & Ellen Johnson
 Kelly & Sue Johnson
 Peter & Elyse Jung
 Lynn Killette
 Jeanette Kimmel
 Steve & Miriam Kimsey
 Charles King
 Don Komjian
 James Lally
 Donny & Pamela Lambeth
 Kathryn Lane & Thomas Fillenwarth
 JoAnn Lashley
 Herbert & Lynn Lawton
 Suzan Ledford
 Marcus Lee & Marla Sutton
 Jack & Barbara Lockhart
 Kirk & Sarah Ludwig
 William Maddox
 Isabella Marko & Elizabeth Marko
 Daniel & Melinda Marshburn
 Barry Martin
 Tom & Cindy Matthews
 Del McAdams, Jr.
 Melanie McCall

PARKWAY LEGACY

Remembering the Everhardts

One sad reflection of 2020 was the loss of two champions of the Blue Ridge Parkway and the Blue Ridge Parkway Foundation. Gary Everhardt, along with his wife, Nancy, both passed away within days of each other in December.

His distinguished career included serving as the Director of the National Park Service (1975-1977) and Superintendent of the Blue Ridge Parkway (1977-2000). The creation of the Blue Ridge Music Center, the Folk Art Center, and the completion of the Linn Cove Viaduct were among the many Parkway milestones achieved during his tenure.

“Gary Everhardt was an impassioned leader, collaborator, and storyteller characterized by his ubiquitous wit and unique ability to make good decisions,” said Houck Medford, the Foundation’s founder. “His extensive experience as a park superintendent and Director of the National Park Service brought to fruition his and my collective vision to create the Blue Ridge Parkway Foundation in 1997. His legacy will endure for generations to come.”

Everhardt had the support, friendship, and respect of all those who followed in his footsteps as superintendents of the Parkway. “Gary was a great friend of many, including me,” said Phil Francis, former Parkway Superintendent (2005-2013) and chair of The Coalition to Protect America’s National Parks. “Gary loved the Parkway and was ahead of his time working tirelessly to bring Parkway neighbors together for the betterment of the Parkway and the region as a whole.”



Gary Everhardt (right) with Foundation CEO Carolyn Ward and Kids in Parks Director Jason Urroz at the opening of the first TRACK Trail in 2009.

The Everhardts were a team that shared in their successes and support of others. “Gary and Nancy were mentors and best friends to my wife, Linda, and me for over 30 years of my National Park Service career,” said Dan Brown, former Superintendent of the Blue Ridge Parkway (2000-2005). “No one could light up a room and bring people together quite like Gary, and if he had a momentary loss for words, Nancy would be there to rescue him. They were an awesome couple. Gary never met a stranger and always remembered a face. This effective approach won many allies and many successes for the Parkway.”

Margaret and Mark McColl
Carol & Hugh McCollum
Eric McDermitt
Anne McKenzie
John & Connie McLendon
Janett McMillan
Richard & Carol McNeel
John McSwain
Jennifer Mendeck
Kent & Judy Mergler
Vicky Moody

Marianne Mooney & Joseph Sasfy
Susan Moore
Brock & Melanie Moore
Wayne & Patricia Morgan
Peggy & Robert Neal
Mary Nichols
Bradley and Diane Ogg
Doug & Kris Ann Oursler
G. Dan & Anne Page
Derek Parks

Matthew Parrott
Lowell & Sally Pearlman
Jim & Susan Phillips
Holly & Lou Pierce
David Pitser
Bobby Post
Janet & Les Pratt
Michael Rankin
Holly Ray
Peter & Zika Rea
Thomas & Martha Reddeck

Liz & Tom Redding
Carol & Dave Reger Family
Kerri Ressimyer
Alexis Richards
Wayne & Teresa Robbins
Dennis & Suzie Ross
Charlie Rust
Alan & Theresa Sadler
Michael Sartisky
Anna Lou Schaberg
Nancy & Richard Scheaffer



"The Blue Ridge Music Center offers a unique musical exploration, perpetuating the origins of our American music, promoting the next generation of musicians, and expanding the way we experience music in one of the most unique and beautiful settings in the world. Over the past year it has been our escape from the new normal. Sometimes music is the only medicine the heart and soul need, and the music center has filled both to overflowing."

- Mary Tucker & Vicki Troutman

Ralph Schiefferle & Elizabeth Perkins
 Mary & Justin Schleibaum
 Sheila Schlosser
 Ken & Kim Schultz
 Jim & Barbara Scott
 Phyllis Setzer
 Bob & Brenda Shepherd
 Janet Sherrill
 Judith Shubert
 Sharon Sigmon
 Patrice & Allen Sigmon
 David Sink
 Alecia Sizemore
 Roger & Leslie Slusher
 Dwayne & April Smith
 Eva Snapp
 David & Paula Snow
 Randall Sparger
 Chris & Hope Squires
 Greg & Dawn Starks
 Allan Starnes
 Katie & Tom Steele
 Mary Stewart
 Jesse Strange, Ret.
 Joan & Paul Stuhr
 Mr. & Mrs. Wesley Sturges

Judie Swain
 Nancy Swonger
 Elizabeth Taylor
 Rush & Doris Thompson
 Suzanne Thorniley
 Claire Tiernan
 Vicki Troutman & Mary Tucker
 Susan & Richard Tumbleston
 Jason Urroz & Jenny Ung Urroz
 Tom & Elizabeth Vasiliauskas
 Mason Venable
 Fred & Charlotte Voreh
 Kirk Wagner
 Anthony Walley
 Carolyn & Alan Ward
 Janet Warner
 Gregory & Debby Warren
 Roderick & Bliss Watson
 Robert & Diane Weaver
 Judith Weger
 Nancy & Tom West
 Anne Mitchell & David Whisnant
 Karen & Gary Wiegner
 Pam Willard
 Clyde Williams
 Richard Williams

Christine & James Williams
 William & Pat Williamson
 Michael & Tanya Wilson
 Brad and Carole Wilson
 Sandra & Larry Winecoff
 Bernd Winkelmann
 Michelle Wrape
 Peggy Wright
 Barbara & Al Yurkshat
 Hilary & Suzanne Zaunbrecher
 Tom & Barbara Zimmerman

**Blue Ridge Music Center
 2020 & 2021 Members**

Benefactors (\$1,000)

Dale Allison
 Victoria Lindberg
 Russ and Nancy McDaniel
 Bebe Purcell

Patrons (\$500)

Ross Allen
 Roy Crouse
 Michael Deane
 Douglas Kivett
 David Lynch
 Chuck and Debbie Miller
 Cindy and Jerry Nelson
 Steven Saylor
 James Schoenberger
 Tracy and Barbara Wilkerson

Promoters (\$250)

Gary Evans
 CW Wenzel

Honors

Those honored are listed in bold. Donors are listed below. (Gifts from October 1, 2020 - September 30, 2021)

Alfred Adams

John & Jill Rose
 Charles & Susan Hauser

Allene Cooley Adams

James & Allene Adams

Alex

Abby Jackson
Suzanne Alexander

Anna Erwin
All the Cyclists who ride the Blue Ridge Parkway

Wallace Bigler
All the talented musicians, past, present & future who perform at the Blue Ridge Music Center

Steve & Patti Stevens

All Women in Bluegrass

Laurie Greenberg

Jeff Andrews

Kathryn Andrews

Jeremy Joseph Andrews

Pat Andrews

Aubrey Arrington

Marianne Kovatch & Ken Landreth

Millie Barbee

Deborah & John Sherrill

Rebecca Barnhardt

Roland & Emilie Barnhardt
 Tom & Megan Lawson

Joe & Wendy Bell

Joan Todd

Wendy Bell

Jessica Bell

Jack Betts

Barnie & Debbie Day

Mr. & Mrs. Doug Blackiston

Madeline Allen

Blue Ridge Boxster Summit

Larry & Pamela Olsen

Blue Ridge Music Center Team

Carolyn & Alan Ward

Blue Ridge Parkway Foundation

Staff

Liz & Tom Redding

Blue Ridge Rally

Sharon Sigmon

Patricia Bolton

Gene Gluchowski

Charles Brady

Brad & Carole Wilson

Jim & Linda Britton

Mary Britton

Jeff Brooks

Karly Brooks

Dan & Linda Brown

Jane & Tom Olsen

Don & Shirley Brown

Whitney Brown

Billie Bryant

Vicki Troutman & Mary Tucker

Megan Bryant

Kathleen Bryant

Nathan & Thomas Bryant

Miriam & David Bryant

Ashton & Madison Burkhart

Keith & Mandi Burkhart

Joanne Burns

Robert Burns

Charlie Arnie Byrd

Wayne & Loretta Cooper

Jane & Richard Carmichael

Sarah Jenkins

Julie Cashman

John & Sandy Townsend

Christine Castelloe

Lyle Adams

JoAnn W. Caudill

Jim Caudill

Angie Chandler

Laura Boosinger

Bill & Melinda Christian

Warren Christian

Pat Shore Clark

Jo Hennelly

William & Lynn Clark

Charles & Isabel Ernst

Matthew Ryan Colling

John & Florence Brinkhous

Hattie Collins

Anonymous

Courtney, Brown & Harasz Families

Bill & Owene Courtney

George Crittenton

Julia Lockhart

Fredda Davis

Roberta & Joseph Davis

Laura & Jim DeJuneas

Bob & Nancy Sumner

Edwin Dennis & Family

Sarah Fanjoy & James Labrenz

Mary Kate Dennis

Edwin & Denise Dennis

Dick & Erin's Wedding

Emily Buttrick

Bob & Carolyn Dillon

Robert & Nancy DeHart

Don & Edna

Mary Baldwin

Barry & Virginia Dooley

Kirk & Amanda Dooley

Bryan Durham

David Durham

Carol Anne Durham

David Durham

Carolyn Durham

David Durham

Harvey & Susan Durham

S. Bryan & Carol Anne Durham

Ginnie Easter

Ken & Cindy Easter

James & Anna Elgan

Robert Elgan

Richard Emmett

Anonymous

Tamara Michael

Mary Craig & Andy Tennille

J.D. & Janie Wilson

Fairy Stone State Park

Sue & Cesar Leon

Anne Farmer

Elizabeth Haynie

CJ Farnsworth

John Drummond

Cathy Fink & Marcy Marxer

Si Kahn

Broaddus Fitzpatrick

Vincent & Mary Basile

Mr. & Mrs. Broaddus Fitzpatrick

Helen Fitzpatrick

Mr. & Mrs. Jean Fitzsimmons

Steve & Katheryn Harlan

Matt Ford

Mike & Shari Smiley

Douglas Forsyth, Betty Harris & Elsie Chambers

Anonymous

Sonja & Gordon Frampton

Ken & Dee Sumlin

Barbara Freeze

Michael & Lori Constantino

Sammie Friday

John Tutwiler

Terry Garber

Sandra Garber & Jim Satterfield

Eli Gellman

Laura Hamm

Richard Genz

Francie Genz

Frank & Mary Giacomucci

Allison McEntee

Ruth & Jack Gibson

John & Kristin Gibson

Jack Gibson, Jr.

John & Kristin Gibson

Jocelyn & Joe Gravois

Michael Gravois

Mary Jean Grose

LeElaine Comer

Ian & Kyle Grove

Joanna Easter

Joseph Guseman & Suka

David & Dianna Guseman

Rowan Christopher Hall

Philip & Terri Hall

Doris Hammett

Dan Pittillo

Arleen Hanchey

C.S. Hanchey

Kevin & Erica Harper

Rob & LuAnne Harper

George & Agnes Harvin

Erwin Bellamy McMerty

Foundation

Erin Hathaway

Kelly Miller

Cynthia Ramsey

Mary Hawkins & Dennis Vanator

Nancy & Don Joines

Michelle Haynes

Melissa Leatherwood

Hazel, Will, Luke & Emory

William & Mary Garrison

Linda Henderson

Anonymous

Wayne Henderson

Betty & William Patton

Nicolas Henke

Matt Kelley

Kate Henry

Susan Cohen

Julie Hettiger

Gina Trippi & John Kerr

Brandi Hillman

Wanda Herren

Rick Hodgins

Virginia Hackworth

Page & Ed Kluttz

John Hollandsworth

Jayne Greene

Hollins University:**Depts of Bio & Enviro Studies**

Mary Jane Carmichael

Diane B. Hubbard

Elisabeth Lane

Tom & Vicki Hunt

Jane Caviness

Judi Hunter

Mike Hunter

Sarah & Bob Hunter

Robert & Jayne Appleyard

Dave & Robbie Irvin

Julia Miley

George Ivey

Laura Ivey

Carol Ann Johnson

Walt Gretka

Murrell & Kathy Johnson

Ken & LaVerne Davis

Nancy & Don Joines

Annie Joines Prentice

Will Joines & Karrie Crouse

Annie Joines Prentice

Juniper

Jeffrey & Cindy Soell

Mike & Cindy Keibelbeck

Anita Henderson

Patricia Keefe

Linda & Duncan Rose

Kids in Parks Team

Carolyn & Alan Ward

David Klinger

James Srebro, MD

Marianne Kovatch

Ashley Edwards & Ralph

Womble

Josepf Kripner

George Kripner

Jennifer Kuntz

Marc Richards

Earl Kuutti

Becky & Randy Pool

Richard & Sandy Landis

Patrick County Tourism

Carl Larson

Robert Larson

George & Janet Larson

Michael Larson

Bob Lassiter

Robert Lassiter, Jr.

Brandon LaVallee

Lee LaVallee

Gary Law

Charlotte Kett

Max Ledbetter

Anonymous

Mr. & Mrs. Dean Ledbetter

Madeline Allen

Susie Leedy

Kimberly Rayford

The Little Family

Mary & Bruce Jacobi

Dell Livingston

Helen Johnson

Mack & Harvey Mann

Heather Sandifer

Candice Stonestreet Martin

Barry Martin

Frank Martin

Marianne Kovatch & Ken

Landreth

Fred Martin

Michelle McCubbins & Carol

McCubbins

Paul Martin & Lisa Martin

Carol & Jim Martin

Ben Masterson

Karen Walter

Flo & Scott Mathis

Lauren Izzo

Cindy Mauney

Scott Mauney

Mr. & Mrs. Ronald O. Mays

Alexis Richards

Willa Mays

Billie Brandon Howell

Harris Prevost

Richard & Debbie Stevens

Dr. Cash McCall

Marcia McCall

Mac McCall

Ginny & Hal Tarleton

Autumn Faye McCarson & Devan Gonthier

Meade Neumann

Joann & Jerry McClure

Jerrienne & Steven Rain

Larry & Sherry McCray

Jeannie & Lawrence Caviness

Lauren McDowell

Barringer Construction

John McGowan

Margaret & Mark McColl

Rachael McIntosh

Holly Ray

Mrs. June McNeil

Rick & Carole Brown

Ronald Wayne Melton

Anne Farmer

Frances Miller

John & Kim Gaal

Pam & Chip Mims

Kathryn Long

Erin & Michael Moran

Patricia & Jim Butler

Deborah Morgan

Mark James

Trails & Views Forever

The Trails & Views Forever program was launched to provide funding for repairs and rehabilitation of trails, overlooks, campgrounds, and picnic areas along the Parkway. Donors who designated a gift of \$1,000 or more became the Founding Funders.

The overall goal for the program is \$3 million to be spent on projects during the next 5 to 10 years. Thanks to support at every level, we have surpassed \$1 million. Today, when you give \$1,000 or more to help us reach our next million-dollar milestone, you can become a designated Trailblazer and receive a limited edition patch. We'd like to thank the following Founding Funders & Trailblazers listed here and everyone who contributed to the program. Donors who are both a Founding Funder and a Trailblazer are marked with an asterisk.*



Anonymous
Anonymous Trust
Alfred & Beth Adams
Bridgett Aguirre
Norman & Linda Aldridge
Mary Allen
Becky Anderson
Judy & Chip Anderson
Carol Baird
Baptist Emergency Department
Linda & Jim Barber
Peter & Jean Anne Barnes
Laura & Bill Barrier
Beth Bartholomew & Susan Hurrell
Joe & Diane Bastian
Larry Beamer & Deborah Haynes
Martha & Jack Betts
Hanes & Lida Boren
Larry Bradley
Martha Brame
Laura Bulson
Mike & Clarkie Brown
Mark Buff
Teresa & David Campbell
Brian Carlton & Elizabeth Sumpter
Julia Carpenter
Peggy & David Carr
Hal & Beth Carson
David Carter
W. Lee Carter III
Ken & Christine Castelloe
Daniel & Lin Celoni
Munroe & Becky Cobey
Gay Coleman

James Coleman
Janet Cone & Larry Imeson
Robert & Kathleen Connelly
John & Faye Cooper
Sam Craver
Martin & Ginger Curry
Andrew & Janice Cwalina
Terry Davis & Gail Hyde
Jennie & Leigh Derby*
Dillon Family Foundation
Ron & P. K. Donson
Elyn & Michael Dortch
Bob Drennan
Mitchell & Polly Dunn
Susan & Harvey Durham
Nathan & Jane English
Jerry & Janet Enos
Eurosport Asheville
Mark & LaVonda Everhart
Thomas C. Fisher, III
Estate of Roy Gallagher, Jr.
John & Janet Garrett
Garrett Family Ever Forward Foundation
Sabrina Gibson
Kelly & Meredith Graves
LaGena Greene
Wes Greene
Larry & Joy Greenwalt
Pete & Linda Hall
Jewel & Neal Hamlett
Karen Hammett
Hanna Foundation
Karen Harding
Carolyn Hart & Sandy Godwin
George & Agnes Harvin
Amret & Wesley Hawfield*

Betty & Keefe Hayes
Lynda Healy-Rejkowski & Don Rejkowski
Hemlock Inn
Henderson County TDA
Chris & Debbie Herbert
David, Patricia, Charlie, & Doug Herbert
Vickie & Charlie Hester
Lauren Hilan
Richard & Mary Hill
Bill & Dee Hilt*
Daniel Hilton*
Cheryl Hirth
Susanne Hite
Rick Hodgins
Carol & Lynn Hogue & Lizzie Outerbridge
Steve & Bridget Holcombe
Phyllis & John Holmgren
Honeysuckle Court — Mehl, Boteler & Almand
Billie Brandon Howell
Richard Ikenberry
Joe & Gayle Intag
Ed & Jane Isbey
Thorunn Ivey
Steve Johgart
John W. and Anna H. Hanes Foundation
Maxine Johnson*
Philip T. Johnson, DVM
Robert Jones
Bill & Sue Jones
George Kegley
Judy & Bill Kendrick
Mary Kilpatrick

John Koenig
Kathy Kueider
Kulynych Family Foundation II
George & Kristy Lampe
Scott & Deanna Lampe
Bob & Jane Lassiter
Jane Ledbetter
Donald & Sandra Leslie
David Lewis
Bob Livingston
Raymond & Jodi Lockwood
Anne B. Long
Kim Long
Beth Lotspeich
Rick Lotz
Joseph & Lu Ann Love
Anita H. Lupo
Pat Mauldin
Catherine Mauro
Emi & Gibson McCall
Diana & Mike McClinton
Warren McCormick
Michael & Rebecca McCracken
Lisa & Andrew McDougald
Jim & Deborah McDowell
Anthony & Patricia McLean
Tom & Pam Metz
Nancy Michael
John & Ruth Ann Miller
Lee H. Minor
Donna Mitchell
Janet Montgomery
David & Julie Moore
Julie H. Moore
Morningstar Foundation
Parker & Deborah Myers
Anna Nagy
Lynn Nash & Katie DeJarnette
Jim Newlin & Silvie Granatelli
Peter & Kelley Newsome
Jane & Thomas Olsen
Adam & Connie Ortiz*
Eric & Diane Overcash
Eric & Kristina Paltell
Leslie Paul
Larry Pearce
T. Pennington Art Gallery
Clifford & Bobbie Phillips
Linda Phillips
Woody & Bobbi Poor
Christopher Puin
Teri & Tony Puleo
Barbara Quicquel
Jerry & Beth Redmond
Rebecca Reeve
Carol & Dave Reger Family
John Rendleman
Randall, Marilyn, Patrick & Tucker Renegar, Holly Jolly
Pete & Kay Ritcher
Chester & Ann Robertson
John & Jill Rose
Susan & Tom Ross

Lori & Time Rowe
 Joseph & Nancy Roy
 Alan & Sherrie Schork
 Edward Scott
 Anne Seawell
 Barbara & Larry
 Settlemire
 Miriam Sexton
 Raleigh & Katy
 Shoemaker
 Marcus Simpson &
 Marilyn Westphal
 Perry Simpson*
 Witold & Shirley
 Siwanowicz
 Kelly & Linda Skillet
 Sherwood & Eve Smith
 Walt & Sharon Smoski*
 Randall Sparger
 Fred & Alice Stanback
 Myles Standish & Shelley
 Crisp
 Jerry & Genie Starnes
 James Stephens & K. Ann
 Berry
 Gary & Lee Anne Stiffler
 William & Cathy Stone
 Ray Stone
 Bob & Janet Stout*
 Charles & Mary Lois
 Strickland
 Kimberly & James Strong
 Les & Julie Taylor
 Bill & Cynthia Tessien
 Claudia B. Thomas*
 Philip & Virginia Thomas
 Tim Thomas
 Arlene Edwards
 Thompson
 Ms. Sterling S. Vestal
 Edward Walker
 Terri Waller*
 Mike & Hannah Ward
 Bill & Judy Watson
 Kirby Werninck
 Carol Westmoreland
 Dermot Whelehan
 Terry & Carolyn Wiley
 J. Tracy & Barbara
 Wilkerson
 John Williams
 Willow Branch
 Foundation
 Brad & Carole Wilson
 Deborah & Ken Wilson
 Ken and Deborah Wilson
 Foundation
 Tom & Candy Wood
 Bruce & Luci Wright
 Michael & Linda Zagorac
 Steve & Nancy Zuk

Enya & Ellison Jacob Morton
 Bryan & Detra Morton
Mr. & Mrs. Clay Muhle
 Alec & Harriet Jablonover
Jake Myers
 Crystal Myers
Ellen R. Myrick & Jane L. Golden
 Jane Clark Moorman
Kara Nielsen
 Tom Nielsen
Hilda Overbee
 Gerald & Brenda Peedin
Fran McCachern Page
 Gary & Lee Anne Stiffler
Sharon Pence
 John & Sharon Pence
Bob & Margaret Phillips
 Ken & LaVerne Davis
Sharon Pinney
 Dennis & Carol Frazier
Judy Poole
 Rodney Poole
Kelsey & Nathan Poole
 Rodney & Judy Poole
Siyano Prach
 Samuel W. Gage II
Les & Jan Pratt
 Nancy & John Aiello
US President #46
 B. Sheila Clendenning
Ranger Melissa Prouty #713
 Marcus Lee & Marla Sutton
Sue Quinzi
 Karen & Michael Cogburn
Betty Raft
 Margaret Champion
Park Rangers
 Eric & Anita Dailey
Marc Reber
 Bret Reber
Julia & Ryan Reedy
 Anita Wilson
Marilyn Renegar
 Randall, Marilyn, Patrick &
 Tucker Renegar, Holly Jolly
Clyde & Gloria Robinson
 George & Michelle Snead
Tom, JoAnn & Jarrod Sams
 Mary Stewart
Donald Saunders
 Jared & Audrey Rorrer
Mary & Jerry Schleibaum
 Peggy Lenhart
Sharon & Bobby Sharp
 Lindley Curtis
Lisa Siciliano
 Fae Davis
Paul Silverstein
 Mitzi Silverstein
Wick & Jane Smith
 Nancy & Ronnie Bryant

Windy Smith
 David Smith
David & Christina Steele
 Del McAdams, Jr.
Bertha Summerville
 Christine & Jim Nickel
Cynthia & Bill Tessien
 Lisa Smith
**The people who maintain &
 create trails**
 Ed & Jane Isbey
Thomas & Corinne's Honeymoon
 Thomas Gray
Bob & Kay Timberlake
 David & Meg Hinson
Sandy Townsend
 Julie & Donald Cashman
**Treasured family times at
 Moses Cone Park**
 Harriet Weiler
**Stephen, Ryan & Devon
 Trevathan**
 Leslie Trevathan
Vicki Troutman & Mary Tucker
 Robert & Jayne Appleyard
Mary Tucker
 Vicki Troutman
Carolyn Ulm
 Mark & Linda Bryan
The Varmints
 William Dixon
Bethney Webb
 Jane & Tommy Opliger
Ethan Webb
 Jane & Tommy Opliger
Joy Webb
 Jane & Tommy Opliger
Tracy & Barbara Wilkerson
 Claire Draughn
Willard Family & Friends
 Pam Willard
Alex Wilson
 Sallie Harrison
Carol & Brad Wilson
 Tom & Megan Lawson
El Wilson
 Donna & Bill Dicks
Sabrina Wind & Joe Shannis
 Alec & Harriet Jablonover
Jay Woodruff
 Louise Law & Rodney Pace
Charles Yurkshat
 Barbara & Al Yurkshat
Chase Alan Yurkshat
 Barbara & Al Yurkshat
Joanna Zebos
 Barrett Zebos

Memorials

Those memorialized are listed
 in bold. Donors are listed below.
 (Gifts from October 1, 2020 -
 September 30, 2021)

Stanley Abbott
 Richard & Kelly Nowak
**Johanna Lichtenfels-Cone
 Abrahams**
 Sanders & Jeanne Abrahams
Charlie & Xanie Adams
 Chuck & Gayla Adams
John Adkins
 Ricky & Sharon Adkins
Walter Stephen Ameika, Sr.
 Matthew Ameika
**Teena Anderson & Christeena
 Joy Anderson**
 Ed Anderson
William Ashley Apple
 David & Donna Huckabee
**James Erwin Asbury & Nesbitte
 Samuel Asbury**
 J. David & Doris Asbury
 Luening
Dick & Jane Auld
 Theresa & Billy Brockway
James L. Avant
 Barbara Avant-Bevington &
 Richard Bevington
Anita Waters Bain
 Judith & Roberts Bass
Keith & Faith Barnebey
 Mark & Marianne Barnebey
Margaret Masalonis Barwick
 Susan Brown
Norah Batham
 Colleen Jelley
Henry & Colleen Baxter
 Ed & Sherree Menius
James D. Bean
 James J. Bean
Pamela Beeler
 Cynthia Covington
Jack & Eleanor Benbow
 David & Phyllis Benbow
Don E. Best
 Leslie & Richard Boone
Beverly Bingham
 Ken & Cindy Easter
Billy Gray Bingman
 Austin Hester
Robert L. Boulay
 Paul Boulay
Charles & Evelyn Bridges
 Gaye Price
Edna & Don Briercheck
 Mary Baldwin
Kirby Brown
 Juliana Henderson

Parkway Protectors



By committing to a monthly donation, Parkway Protectors play an essential role in sustaining the Foundation's mission to protect the 469-mile scenic route. We hope that you will join this growing group of steadfast supporters. Your gift is where the Parkway's future begins.

Anonymous
James & Allene Adams
Lewis Addison
Rance Allen
Ed Anderson
Mark Anderson & Michelle Fitzgerald
Thomas Avery
Cynthia Billings
Candace Blanco
Daniel & Pamela Bowden
Theresa & Billy Brockway
Whitney Brown
Robert Burns
Margaret Burroughs
Ken & Christine Castelloe
Terri Cooper
Amy & Mike Copley
Cynthia Covington
Martin & Ginger Curry
Karen Dahlgren
Jim & Shelia Deal
Edwin & Denise Dennis

P.K. & Ron Donson
Erika Fant & Quinn Lundquist
Elizabeth Fenwick
Terry Ellen Garber
Katelyn E. Ghelardini
Russell Gill
David & Hannah Gray
Maurie Gray
Alan Harms
Allison Harrell
Christina Helms
Erin & Paul Hetrick
Billie Brandon Howell
Joe & Gayle Intag
Ed & Jane Isbey
Martha Jenkins
Michael & Catherine Lamm
Jay Lathrop
Rick Lotz
Isabella Marko & Elizabeth Marko
Allison McEntee
Claire K. Melton
Pat & Harold Miller

Paula Mitchell
Julie Moore
Brock & Melanie Moore
Emily Morgan
Jennifer Mullan
Frank & Jane Murden
Lee Ann Patterson
Cynthia Payne
David Peeples
Raj Rao
Chip Register
Charles & Kathy Rose
Janet Sherrill
Marie Silverstrim
Eva Snapp
John Speckhard
Heather Stehle
Sarah Stroud
Ginny & Hal Tarleton
Julie & Les Taylor
Susan & Richard Tumbleston
Jason Urroz & Jenny Ung Urroz
Skylar Whitmire
Melissa Williams

To become a Parkway Protector, visit ParkwayProtector.org.

Sacha Brown
Adrian Brown & Keith Flynn
Bruce Beaudin
Mary C. Kilpatrick
Dylan Charles Bruns
Lou & Andrea Bruns
Lola Bryant
Vicki Troutman & Mary Tucker

Sharon Buck
Dudley Buck, Jr.
Suzy Buckner
Marion Danforth
Harold & Lucille Bumgarner
Brenda Moore
Jerry Burns
Janice Burns

Joe Cahill
Jan Cahill
Isaac Cahill & Nan Davidson
Rudy & Cyndy LoMonaco
Don Caine
Richard & Mary Hill
Boyd C. Campbell, Jr.
Margaret Campbell

Robert & Louise Metcalf Canipe
Martha Canipe
Hubert A. & Gozeal M. Canter
Richard & Carol Canter
Mack L. Capps
Sara J. Capps
Robert & Mildred Carnes
Karen Demby
"Steady" Cash
Richard & Mary Hill
Dianne Catullo
Richard L. Catullo
Henrietta Caylor
Ed Caylor
Ambers Wayne Clark
Anna McGowan
Jay Collins
Kevin Coons
John & Harriet Combs
Douglas Combs
Martin J. Condon, III
Anonymous
Barbara Cone
Well Spring Life Plan Community
Lenore P. Cooksey
Mark & Marianne Barnebey
Mary Lee Cooper
Tryon United Methodist Church
Alford & Dorthea Coseo
Claudia Coseo-DeRidder
Bud & Trudy Cox
Martha Cox
Truman A. Critcher
Joseph Critcher
Wilson Warner Cropp, III
Kaye Gaffney
Sandy Crossley
Andrea Spencer
Elizabeth Shelby Parker & Margaret Becton Crumpler
John & Lynette Parker
TJ & Billie Curtis
Karen Curtis-Gwynn
John Cutrell
Lynda Flowe
Peter J. Dahlgren
Karen Dahlgren
Bobby A. Dale
Alene Dale
Drogo the Great Dane
Tom & Pilar Fotta
L.B. & Dot Daniels
Ernest Rogers
Harriet Davant
Marcia Quinn
Gary T. Davenport
Joan Davenport
Douglas Nesbitt Davies
James Colvin Davies

Roy & Lee Davis

E. Carson & Lou Ann Brisson

James H. Dean

Sandra Dean

Warren Cameron Dennis, Jr.

Edwin & Denise Dennis

Eleanor Dundon

Sarah Fanjoy & James Labrenz

Roxanne Hohnerlein

Kenyon Kelly

Mark & Beth Shaver

University of Georgia Online
Learning

Alyson Watts

Nancy & Richard Willis

Betty S. Dooley & Donald L.**Carter**

Peggy Carter

J. Horton Doughton

James Doughton

Paul A. Doyle

Elizabeth Doyle

Jo Duncan

Grady Duncan

Howard & Doris Dye

Barbara Robinson

Cash, Dillon & McKenzie Easter

Ken & Cindy Easter

Parks Easter

Ken & Cindy Easter

Ed Easter

Ken & Cindy Easter

Olen Easter

Ken & Cindy Easter

Steven R. Eberhardt

Polly Eberhardt

June & Joe Eby

Emily Eby

Zell Marks Eckert

Rick & Cecelia Marks

AJ Emmett

Cristal Shreve

Christopher A. Eno

Frederic Eno

Barbara Lee Escandon

Phillip Escandon

Todd Benjamin Evans

Michele & J.W. Stinnett

Gary & Nancy Everhardt

Joe & Cheryl Aull

Harris Prevost

Frank & Dixie Quinlan

Connie & Gilbert Backlund

Blue Ridge Parkway Employee

& Alumni Association

Dan & Linda Brown

Nancy & James Creel

Gary & Sandy Johnson

Sheila Miller

Carolyn & Alan Ward

Charles Fant

Erika Fant & Quinn Lundquist

Mr. & Mrs. Bud Faw

Gary & Jolene York

Betty Jean Feamster

Crawford Honeycutt

Henry H. Ferguson

Sharon & James Hutchens

Harry Timothy Fleck

Veronica Fleck

Mary Ann Foust

Lisa Helsel

Gary Fratianne

Gary Fratianne

Curtis Freeze

Michael & Lori Constantino

**Friday, a 4-legged companion
& gift from God**

Roger & Martha Charles

Kathy Sue Fugate

Thomas Fugate

Wyatt Furr

Kevin Furr

Charles Aaron Gabriel

Andy Gabriel

Ranger James Gallimore

Larry Liddle

Albert R. "Ron" Garber

Terry Ellen Garber

Dave Garland

Tom & Janet Bachmann

Alan Geer

James Srebro, MD

Cody Gibson

Shelley Gibson

Harold Gilbert, Sr.

Anonymous

David Monroe Glenn & Emily**McKinney Glenn**

Melissa Benton

Billy Thomas Glenn

Skylar Whitmire

Charlotte & Norman Glock

Jennie Glock

Grandma D

Peter Carrill, Jr.

My Grandparents

Shelley M. Green

Floyd Everett & Almeta Norris**Greene**

Judy Greene

Charles Greene

Cook's Heating & Cooling

Whitney Frazier

Vern Greene

George Greene

Andrew Bradford

Greg Bradford

Michael Gregory

Ed & Denise Gregory

Taylor Griggs

Thomas Morris

Mamie Melrose Grindle

Jim & Jean Pruitt

Dr. Wendell Guerry

Vickie Guerry

Frank & Ginny Guertler

Andrew & Teri Guertler

Mary Guynn

Broaddus & LuAnn

Fitzpatrick

W. Gray Parks

Lisa Hambrick Hagebak

Greg Abbott

Jeff Adcock

Beth Arogeti

Dana Atwood

Dee Bentley

Dexter & Sue Blois

Diane Daughtry

Nina Day

Pepper Ellis-Hagebak

Ione Farrar

David Fineman

Don & Erika Flowers

Phillip & Marjorie Goshert

Ted Grussing

Beaumont Hagebak

Hawk Hagebak

Kevin & Kimberly Halloran

Savannah Hamerla

Josefa Howard

Huling-Costilla Family

Candy Hunter

Dale & Susan Hutson

Patricia Janasky

Jenny Lee

John McCraw

Linda McIntyre

Susan Mihara

Karen Osborne

Karen Patton

Brenda See

Christine Simonton

Martin Sohovich

Raegan Thorp

Skip Weiland

Brian Ziel

**Russell F. Hall, Jr. & Susanne H.
Hall**

Rusty & Barbara Hall

Ken Bremer & Mildred Hamelink

Brian DeCann & Pamela

McCarrick

Edna Mae Hamilton

David & Angela Hamilton

Chuck Hammersmith

Douglas Flint

Betty & Brantley Hart

Dorothy & Daryl Kirk

Patricia Hathcock & Geraldine**Kilpatrick**

Allison Dains

Michele Hathcock

Anthony J. "Tony" Hayes

Sandra Hayes

Richard Edward Heath, Jr.

Kathryn Bell

Lana & Jimmy Hardy

Larry Higdon

Geoffrey Hinshaw

Rick & Lou Ann Hinshaw

Jane & David Kinney

Hilda Heidingsfelder

Brentan Edwards

Landon Roberts Henry

Jennifer & Clay Ballantine

Susan Cohen

Field Coxe & Florence Henry

Roger & Kate Henry

Jocelyn Reese

Jerry & Patsy Herndon

Jeannie Workman

Liz Hessler

Benton & Rebecca

Montgomery

June & Bruce Hicks

Penny Conners

Dr. Dennis L. Hill

Kathleen Hill

George Hill

Patty & Jeff Joyce

Diane Holder

James & Madeline Lloyd

Bob Hoogstoel

Kip Newton

Jeff Hoppach

Robyn & Ken Nixon

Rosemary Hornak

Robin Gaitens

Eva Snapp

Shirley & Ira Howard

Sara Howard

Raleigh & Mary Hunt

Alice Wilson

David Ivey

George & Laura Ivey

Charlie R. Jackson

Cheri Faust

Yvonne Jackson

Robert Jackson

Mrs. Earl James

Stephanie Carlson

Hal Jaus

Victoria Jaus

Dave Johnson

Maxine Johnson

Johnson

Diane & Kurt Ludwinski

Kenneth Johnson

Judy Johnson-Paonessa

Ruth Reaves Johnson

Nancy Michael

Dr. Harley E. Jolley

Dan & Linda Brown

Georgina Bruce & Sally Bruce

Withers

Chris Cantrell

John Hough

Blue Ridge Parkway Foundation

Florence Sanders Jones

Mary Phipp

Launa McClure Jones

Joyce Lockman

Dorothy "Dotti" & Don Kamin

Carolyn & Russell Butler

Joseph Kelley

Dan & Linda Brown

Mary Louise Kidd

Jim & Rachel Smith

Eddy M. Killette

Lynn Killette

Glenn Killon & Gertrude Killon

Jacqueline & Donald Brooks

Mr. & Mrs. Chandler King

Margaret Burroughs

Cathryn Kinser

Gary & Diane Osborne

J. Michael Smith

Frances Dowell Kiger Kirkman

Ashli Gaines

Alice Kunka

Proximity Malt

Charles & Mary Routh

Larry Knapp

James & Madeline Lloyd

Kimberly Knight

Martha French

Roena & Petro Kulynych

Brenda Cline

Kulynych Family

Foundation I, Inc.

Kulynych Family

Foundation II, Inc.

Janice K. Story

Jimmy W. Lambert

Susan Lambert

Gary Laney

Debra Laney

Marianne Larson

Carl Larson

Robert Larson

Bill & Blanche Lawless

Sue & Cesar Leon

L.L. Lewis

Anonymous

Michelle Ligon

Cliff & Diane Black

Grace Lovegrove

Rick & Lisa Lovegrove

Boo Boo Lovelace

Renee & Roger Alexander

Jack Lunnen

Tiffany Barr

Don Mahr

James & Jane Morrison

Kathleen & Rachel Malek

Amir Malek

Cheryl Marshbanks

Bill & Julee Rose

David A. Martinez

Claire K. Melton

Hazel Mathis

Sara Carter

Vann M. Matthews

Alice Matthews

Michael McCoy

Hilary & Suzanne Zaunbrecher

Carl & Mary Jane McCrary

Anonymous

Bill & Hilda McDonald

J. Tracy & Barbara Wilkerson

Bob & Shirl McDonald

Tammie & Scott McDonald

Rose G. McDougald

Lisa & Andrew McDougald

John & Nelda McElrath

Marian & David Bell

Sarah Kathleen McKinney

Susan & Dermot Leech

Dolores Stankes

Christine & Leo Tuttle

Dick McKnight

Greg McKnight

Mac & Marguerite McLawhorn

Dan McLawhorn

Thomas Craig McMillan

Janett McMillan

Linda Medeiros

Manuel Medeiros

Jerome Robert Mescher

Anonymous

Jodie Bailey

Nicholas Bevan

Paul Botzman

Michael & Crenda Bradley

Paul Carpenter

Dianne Clay

Kathleen Curtis

Casey Heim

Shannon Jagodinski

Eric Mescher

Ken Mescher & Patti Hale

Trent Petry

Lauren Quig

Katie Salyer

Sarah Sutton

Barry Weaver

Gerald Edward "Jerry" Meyer

Dorothy & James Ables

C. Neal Alexander

Sherry & Tony Barretta

Josh & Rosemary Bradley

Ed & Janet Ernst

Cindy Gadd

Bonnie & Harvey Henry

Russell & Sara Isenhour

Sara & Hal Kidd

Melanie Martin

Misty Mountain Property

Owners, Inc.

Cathy & Larry Miners

J. Talmadge & Celia Owen

Queen's Grant High School

English Department

Sadie Starnes

Kate & John Vassallo

John Wright

Betty Mickey

David & Sally Withers

Jan Stewart Miller

Anthony Verrecchio

Junior Miller

John & Kim Gaal

Henry R. "Hank" Modlin III

Terry Jones

Gov. Dan K. Moore, Sr. & First

Lady Jeanelle Moore

Brock & Melanie Moore

Marshall Morrison

Margaret Champion

Theodore & Nora Morrison

Eleanor Chamness

Robert V. Murrish

Barbara Murrish

Tyler Myers

Wendy Loggins

Kay Myers

Ellen R. Myrick & Jane L. Golden

Jane Clark Moorman

Charles W. Naeser

Nancy Naeser

Sherron Nash

Carey Marsh

Penny Kay (Fredrick) Nennig

Patti & Greg Enloe

Dr. Robert L. Nichols

Mary Nichols

Dwight & Lou Nichols

Nan Van Hoy

John Nichols

Steve & Leigh Ann Nichols

Melanie Nitka

James Nitka

Charles E. O'Berry

Carolyn O'Berry

Howard & Wave Olson

David & Phyllis Benbow

Don Osborne

Virginia Osborne

Patricia McDougale Osteen

Wanda Watson

Louise Owen

Ed & Janice Conroy

Paige Painter

Dan & Linda Brown

Virginia Parsons

Thomas & Martha Reddeck

David Paschal

Maria Paschal

Maud Paul

Keith Miller

Raymond J. Pease, Jr.

Sue Bernie

David Drury

Laura Pease

Liz & Peter Wright

Brooks Peebles

David Peebles

Penny Robertson

Randy L. Robertson

Ken Philemon

James & Madeline Lloyd

Arthur Phillips

Barbara Phillips

Jerald H. Pietan

Mary-Frances Styczynski

Dr. William R. Pitser

David Pitser

J. Gregory Poole, Jr.

Sherwood & Eve Smith

Lula Bug Poythress

David & Nancy Poythress

Michael Disher Radford

Anne & Phillip Wilson

Mildred Ramsey

Shirley Barlow

Sarah Wright

Tony Rand

Jim & Shelia Deal

Donald Rex

Shelley Gibson

Lee Reynolds

Barbara Reynolds

Mary Richardson

Gordon Richardson

Chester Robertson

Allison Lawson

Margaret M. Robertson

Beth & Al Osbahr

Penny S. Robertson

Randy L. Robertson

Dick Rose

Susan Moore

Kathy Ross

Deb Austin

Paul Rudd

Susan & Henry Sink

Sadie

Lee & Nancy Romig

William & Janice Schroeder

Steve & Nancy Zuk

Steve Schuster

Mary Anne Howard

John B. Scott

Amy & Rick Boucher

Dr. Marilyn Seskin

Robert Sugarman

Harry A. Shannon, Jr.

Charles & Shannon Davis

Patrick M. & Julia T. Sharpe

Anonymous

Rusty Sherrill

Karen Halloun

J.R. Shew

Wayne & Rebecca Shew

Bobbie P. Shore

Michael Shore

Mildred Shumate

Anonymous

Officer Brian Sicknick
B. Sheila Clendenning
Oscar Curtis Simmons
Mark & Julie Simmons
Ken Simmons
Gerald & Janice Whisenhunt
Joseph "Jody" Simpson
Patricia Bigsby
Cynthia Phillips
Rebecca Van der Sommen
Joseph Sloane
Therese Sloane
Bill Smith
Bob & Jackie Thompson
Jean C. Smith
Robert Johnson
Newt Smith
Dorothea & Hugh Hassell
Ritchie Smith
Larry & Marty Kiger
Craig Stephen Snider
Judy Shomaker
Margaret Pritchard Somers
Albert Somers
Randall Sparger, Jr.
Randall Sparger
George Cable Spurlin, Jr.
Jeanne Kimball
Cindi King
Nikki Orié
Phyllis Owens
Sandy Smith
Athel Keith Stafford
Janice Stafford
Elizabeth Stahl
Anonymous
Lola Y. Steelman
Jack Steelman
Paul Steiger
Benton & Rebecca
Montgomery
Jane & Paul Stephan
Susan & Paul Stephan
**Paul Stewart & Garland
Marshall**
Gary & Lisa Stewart
Ann Stone
Jon Wallace
Rowan Monroe Strother
Lisa Strother
Alvin A. Sturdivant, Jr.
Shirley Sturdivant
Tyson Swain
Judie Swain
James H. Taylor, Jr.
Liz & Peter Wright
Roy Thompson
Arlene Edwards Thompson
Gene Allen Trippe
Susan Smith
Jerry Ulrey
Amy Frutiger

Eric Underwood
Juli Underwood
**Bobby, Marian, Michael Vanhoy
& Sally Trexler**
Karen Martin
Buddy Walker
Ernest Walker
Betty & Al Watson
John & Mary Anderson
Eric Anderson Weigel
Larry Weigel & Jayne Anderson
Hubert & Dorothy Weir
Perry & Nancy Weir
Barry Werninck
Kirby & Gloria Werninck
Karen M. Whelehan
Karen & Bill Tait
Dermot Whelehan
Helen White
Mary Allen
Peter Whiteley
Judy & Glenn Morris
Ronald L. Whitworth
Mary Whitworth
Clyde Raymond Widner
Rita Larkin & Richie Whitson
Carolyn & Alan Ward
Bill Wightman
Jim Wightman
Harry & Eudora Williams
Sharon & Thomas Parsons
Steve Williams
Anonymous
Barb Wilson
Susan Perkins
**Christopher Hughes "Chris"
Wilson**
Kathlyn Budde
Court Counsel Team,
Twelfth Judicial Circuit of
Florida
Victoria & Charles Freeman
Matt & Keri Holian
Jacqueline Hurwitz
Angela & Paul Larkin
Corey Lenger
Charlotte McRanie
Phyllis Perkins
Kathleen Prosser
Linda Schissler
Carol & Michael Smith
Carol Strittmatter
T. Raymond Suplee
Barbara Wilson
Joe Wilson
Susan Archer
Marianne Kovatch & Ken
Landreth
William J. Wilson III
Greg Wilson
Kim Winn
Brenda Bergeron

Paula Winston
Walt & Sharon Smoski
**Marilyn Winters & Robert
Winters**
Sharon Winters
Robert Winters
Roger & Marilyn Winters
Scott Thomas Witty
Buddie Wetli
Brenda Wey & John Fillinger

Zane N. Woodie
Sandy Woodie
John Woodruff
Louise Law & Rodney Pace
Dennis Yetter
Michael Puskar
Mr. & Mrs. Howard York
Gary & Jolene York

We make every effort to correctly record and display donor names, honors, memorials and gift amounts. If an error is found in this report, please let us know either by phone at (866) 308-2773, ext. 245, or email Jordan Calaway at jcalaway@brpfoundation.org.



PARKWAY CHAMPIONS

A Plate per State!

We are grateful to the thousands of North Carolina drivers who show their support for the Blue Ridge Parkway by purchasing or renewing their specialty license plate. In 2020, the North Carolina plate raised more than \$500,000 for enhancement projects and visitor programs.

Virginia drivers can now join their neighbors in North Carolina in supporting the Blue Ridge Parkway by preordering the commonwealth's own specialty license plate. We're accepting applications now.

Together, the two plates can help fund natural resource protection, historical and cultural preservation, maintenance, repairs, and more within the national park unit. To order the plate in your state, visit GetThePlate.org.





Front cover: Blue Ridge Parkway near Thunder Hill Overlook, Milepost 290.4. Photo by Nicholas Moore.

Back cover: Woodfin Cascades Overlook, Milepost 446.7. Photos by A. Armstrong. Courtesy of NPS/Blue Ridge Parkway.