



**BLUE RIDGE
PARKWAY
FOUNDATION**

2019-2020 ANNUAL REPORT

OUR MISSION

We are the primary fundraising partner for the Blue Ridge Parkway, providing support for initiatives along the 469-mile route, including natural resource protection, historical and cultural preservation, visitor amenities, and education and outreach.

LEADERSHIP

Blue Ridge Parkway Foundation

Board of Trustees

Alfred Adams, <i>Chair</i>	Bob Lassiter
John Mitchell, <i>Vice Chair</i>	Jim Newlin
Jim McDowell, <i>Treasurer</i>	Rebecca Reeve
Jennifer Zuckerman, <i>Secretary</i>	Jerry Starnes
Paul Bonesteel	Bob Stout
Billie Brandon Howell	Cynthia Evans Tessien
Craig Lancaster	Brad Wilson

Board of Advisors

Greg Andeck	Peter Givens
Becky Anderson	Brian Gulden
Jim Barber	Charles Higgins
Anne Barnes	Sean Higgins
Jack Betts	Michael Hobbs
W. Louis Bissette, Jr.	David Holt
Philip Blumenthal	Raymond Hornak
Greg Brown, Ph.D.	Olson Huff, M.D.
Whitney Brown	George Kegley
Hobie Cawood	Julie H. Moore
Bob Clark	Phil Noblitt
Pat Shore Clark	Tanya Marie Pender
Heather Cotton	Bob Shepherd
JoAnn Davis	Gary Stewart
Dan Donahue	Kent Tarbutton
Harvey Durham, Ph.D.	Morgan Tarbutton
Joe Epley	Anne Mitchell
Broadus Fitzpatrick	Whisnant, Ph.D.
Donald H. Gest	Richard T. "Stick" Williams

Staff

Carolyn Ward, Ph.D. <i>Chief Executive Officer</i>	Blue Ridge Music Center Program
Kevin Brandt <i>Project Manager</i>	Richard Emmett <i>Program Director</i>
Jordan Calaway <i>Development Officer</i>	Marianne Kovatch <i>Associate Program Director</i>
George Ivey <i>Development Officer</i>	Aubrey Arrington <i>Partner Interpretive Ranger</i>
Rebecca Barnhardt <i>Development Associate</i>	Kids in Parks Program
Audrey Pearson <i>Program Manager</i>	Jason Urroz <i>Program Director</i>
<i>Trails & Views Forever</i>	Adam Roades <i>Associate Program Director</i>
Elizabeth Hickman <i>Finance & Administrative Manager</i>	Allison Royal <i>Graphic Design & Outreach Coordinator</i>
Rita Larkin <i>Communications Director</i>	Erin Voss <i>Administrative Assistant</i>
Jacob LeBlanc <i>Communications & Graphic Design Manager</i>	

The Blue Ridge Parkway is “America’s Favorite Journey” for millions of visitors, neighbors, friends, and family.

The Parkway is a refuge where you can find yourself, explore the history and culture of the mountains, and reconnect with nature. As a member of the Foundation’s Community of Stewards, you know more than most how vital the Parkway is to the environmental health of our mountains, the economic health of our communities, and your personal health and well-being.

One positive outcome in this unprecedented year is the clear evidence of just how important the Blue Ridge Parkway is to the lives of thousands of supporters, including you. You have pushed ahead with your dreams for the Parkway and made an enormous impact on its future. Because of your dedication, socially distanced outdoor concerts at the Blue Ridge Music Center offered visitors a safe place to experience mountain music; the renovations of the storied Bluffs Restaurant are complete, and it will welcome diners next spring; and historical restoration work will get underway at Flat Top Manor this fall.

Although many of our gatherings in 2020 were postponed, we joined together in solidarity behind our park. Thank you for your continued support. It made all the stories in this Annual Report possible. And thank you for allowing the Blue Ridge Parkway Foundation to amplify your voice, your impact, and your legacy for America’s Favorite Journey.



Carolyn Ward
Chief Executive Officer

Heraclitus, a Greek philosopher, believed that the world is defined by constant change.

In a year that has seen many changes, I would like to acknowledge the importance of the constant and steady support from the Blue Ridge Parkway Foundation’s Community of Stewards. This year we were excited for some changes, such as entering into the park’s first historic lease with the Foundation for the operation of The Bluffs Restaurant. This change was a bold step together in pursuit of the National Park Service mission. The Bluffs project now helps to ensure both the protection of one of the original developed areas along this historic route as well as the preservation of the area’s cultural heritage that is beloved by so many. Because of your support, a new generation of park visitors can now discover and experience this special place.

There were also many unanticipated changes this year. Park staff and our partners have weathered the uncertainty and challenges of 2020 with skill and professionalism, and I am hopeful that we will emerge from this time more focused and with a renewed commitment to caring for the Blue Ridge Parkway. Public lands like the Blue Ridge Parkway and future generations of visitors will be the beneficiaries of this renewal. These uncertain days have reinforced how today’s decisions and actions impact all our tomorrows. Thank you for being our partner on this important journey.



Neal D. Labrie
*Acting Superintendent
Blue Ridge Parkway*

ENHANCING VISITOR EXPERIENCES

Hiking adventures, unparalleled views, and favorite gathering places are just some of the experiences that make up a wonderful Parkway journey. Your support plays a key role in keeping visitors safe, creating great memories, and inspiring a deep connection to this magnificent landscape.

HIKER SAFETY

Wilderness Signs

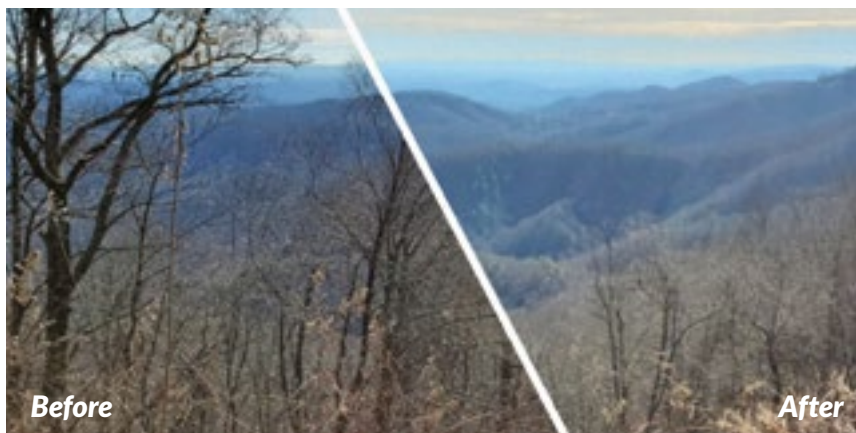
Acres and acres of state parks, national forests, and recreation areas border the Blue Ridge Parkway and extend its expansive beauty. Graveyard Fields, at milepost 418, is one such place: the trailhead lies on the Parkway, but the trail itself leads hikers into Pisgah National Forest in Haywood County. Ninety percent of search and rescue calls in the county originate on federal land.

To help keep trekkers safe, the Foundation collaborated with The Pisgah Conservancy, Southern Appalachian Wilderness Stewards, U.S. Forest Service, and Haywood County Emergency Services to design and post 22 signs with tips about wilderness preparedness and bear encounter safety.

Following the installation of the signs, there has



been a 50 percent decrease year-over-year in search and rescue calls on federal land in the county. It is a great example of the power of partnerships, having helped hikers stay safe while freeing up emergency responders for the many demands of their critical jobs.



The Lump Overlook, milepost 264.4

TRAILS & VIEWS FOREVER

Clear Views

In January 2020, arborist crews cleared overgrown vegetation at seven overlooks in the Highlands District to give travelers back gorgeous views of the mountains. The ongoing work is a key aspect of the Trails & Views Forever program which will also repair and maintain hiking trails, campgrounds, and picnic areas. *(Learn more on page 23)*



PROJECT COMPLETE

The Bluffs Renewed

What's old is new again at The Bluffs Restaurant at Doughton Park. The renovations are complete, and for many visitors, the former coffee shop appears just as they remember it, with green and white checkerboard floors, the long lunch counter, and the same light fixtures that hung in the restaurant for more than 60 years.

Special care was taken to keep the charm of the original midcentury stone building, but there was much more behind the project, including a new electrical system, all new restaurant equipment, and reconfigured restrooms that are now ADA-compliant. This summer, volunteers lent a hand to clear overgrown plants and add new stripes to the parking lot.

Revitalization of The Bluffs has been a long-term effort. During the decade it remained closed, the facility fell into a serious state of disrepair. Four years ago, you stepped up and began the process of raising funds to restore the restaurant. A combination of donations from individuals and organizations and support from the State of North Carolina and

Appalachian Regional Commission ensured that the rehabilitation moved ahead. More than 500 donors contributed nearly \$1 million to help complete the extensive project.

Thank you for making sure this beloved destination was not lost forever. We can't wait to welcome you for a meal when The Bluffs opens in spring 2021!

Photo by David Huff.

Live Feed

No matter where you are, you can enjoy a view of the Blue Ridge Parkway every day via a new webcam atop The Bluffs Restaurant at milepost 241. With this live feed, you can witness fall colors progressing in trees, catch the occasional snowfall, or watch spring return as the leaves fill in the canopy. Thank you for supporting a project that brings a Parkway perspective into homes around the world. Take in the scenery at BRPFoundation.org/webcams.

PRESERVING HISTORY & CULTURE

The Blue Ridge Parkway weaves the narrative of history into our modern-day lives. This national park unit showcases the experiences of those who came before us and the special places that embody stories of the past. By offering engaging ways to discover our history, we can ensure traditions and tales endure for generations to come.



PROJECT COMPLETE

Photo Archive

Thanks to your gifts, anyone can now view and download photographs and documents that chronicle the Blue Ridge Parkway's history. This project allowed Parkway staff to host an intern who labeled and categorized more than 8,000 photographs and documents to upload to the National Park Service's online archive, NPGallery.

This fall, the gallery connected Neil Bridge with his family's past and ties to the Parkway.

"My grandfather worked for the National Park Service on the Parkway until his retirement. The gallery not only led me to photographs that could potentially show my grandfather, but the search feature let me find two photos that were actually tagged with his name, along with the date and location," Bridge explained.

All images in the gallery can be downloaded for public use. Bridge plans to print and frame the photos he found as a Christmas gift for his mom. "Thank you to the NPS and for helping me connect with my past, and to bring some holiday happiness to my mother."

ONGOING EFFORT

Cone Renovations

For years, a boarded-up dormer window at Flat Top Manor has served as a distinct reminder that the historical gem is in trouble. This fall, help will arrive when crews begin the extensive exterior renovation of Moses and Bertha Cone's former home. Fittingly, the work will begin with the windows, before moving on to the wood siding, columns, shingles, doors, porch ceiling, gutters, and additional features in the spring and summer of 2021.

Although the pandemic prevented work from beginning earlier this year, good news arrived during the holding pattern. The National Park Service reassigned additional funds to the restoration, in great part because of your past contributions. With your donations already secured, the project is considered "shovel-ready," a key factor in deciding the order of initiatives across the national park system. The increase in funds from the federal government will broaden the scope of work on the house, and multiply the impact of your generosity.

Soon you will be able to see that impact as the manor receives the care and attention it deserves. Thank you for your tremendous commitment, determination, and patience on this path to return Flat Top Manor to its former grandeur and honor all the history it holds.



A boarded-up dormer window is one of many features that will soon be repaired at Flat Top Manor.

Virtual Tour of the Manor

You can tour Flat Top Manor with a new virtual interpretive experience funded by your gifts. From your computer, you can explore the manor's interior, interacting with touchpoints that highlight the architectural features, stories of its former residents, and the furnishings it once held. Visit brpfoundation.org/tour today!

An earlier project laid the groundwork for the Parkway portion of NPGallery. Approximately 7,000 of the photographs in the gallery were originally scanned and digitized for the Driving Through Time website, a digital humanities project of UNC-Chapel Hill led by Dr. Anne Mitchell Whisnant, the author of *Super-Scenic Motorway: A Blue Ridge Parkway History*.

Explore the archive at NPGallery.nps.gov/blri.

Opposite: Visitors at the summit of Sharp Top Mountain in 1960. Photo by Earl W. Estes.

Right: Bridge's grandfather, Gordon Demastus, in 1953.



EDUCATION & OUTREACH

By elevating the Parkway as a place of learning, we can create a deeper sense of responsibility for its care. Programs that highlight traditional mountain music and family-friendly trails are instrumental to the Foundation's mission.

NEW CONNECTIONS

Kids in Parks

As soon as COVID-19 shut down schools and places of business in March of this year, many found themselves cooped up inside their homes, wishing for a way to take their minds off their worries. Kids and families began flocking to parks and public lands, including TRACK Trails, in record numbers. To avoid contributing to the spread of the virus, Kids in Parks staff asked park partners to remove the self-guided brochures from trail kiosks.

The program needed a safer way to reach kids, and within weeks of the shutdown, it released a series of new e-Adventures on the program's website. These adventures provide kids and families with engaging activities to complete using a smartphone or tablet in their backyard, neighborhood, or any green space.

From Animal Athletes to Bug Out, e-Adventures convert some of the most popular TRACK Trail brochures into fun, electronic games, and kids can still record their progress online to earn prizes. The activities also include the meditative practice of Forest Bathing to help reduce stress and improve mental well-being during this challenging time.

"People are beginning to realize, or at least



A Trail TRACKer identifies lichens as part of the Hide and Seek e-Adventure.

remember, that our parks and public lands are here for them," said Jason Urroz, Director of Kids in Parks. "They see that exploring trails is a great way to improve their overall health."

For more information on E-Adventures, visit KidsinParks.com/e-adventures.

CONTINUING EDUCATION

Webinar Series

When in-person events were put on hold earlier this year due to the pandemic, the Foundation introduced the Insider's Report, a free webinar series to highlight the projects you make possible and stories of Parkway history, culture, and nature. Each session

featured a different topic, including the history of Flat Top Manor, fly fishing, keeping kids active during COVID-19, and navigating the National Park Service's online gallery and archive. Look for more webinar announcements in our e-newsletter and on our website's events page. To view recordings of past presentations, visit our YouTube channel at youtube.com/BlueRidgeParkwayFoundation.



CULTURAL CONNECTION

The Blue Ridge Music Center

The Show Goes on

With new precautions set up in response to the COVID-19 pandemic, the Blue Ridge Music Center proved to be a summer refuge for fans of mountain music. The spacious outdoor amphitheater allowed guests to spread out and enjoy the five concerts that made up this year's *Roots of American Music* series. Highlights of the season included a stellar performance from Grammy-nominated singer-songwriter Amythyst Kiah, an appearance by up-and-coming genre-bending artist Sierra Ferrell, and the old-time, new-time string band sounds of Chatham Rabbits. In addition to concerts, visitor services and interpretive programming carried on with help from Partner Ranger Aubrey Arrington, whose position was funded this summer in collaboration with the National Park Service.

A Fresh New Face

The Music Center updated its look with a new logo and website. This year's promotional materials featured the logo, fresh fonts, and a festive blue-and-orange color scheme that better represent the vitality of the musical experiences offered at the

amphitheater, museum, and visitor center. October brought the launch of the redesigned website, carrying the new look into the digital world while making BlueRidgeMusicCenter.org more mobile-friendly and intuitive for users.

More Music to Come

Later this year, the Music Center will host a series of online interviews as part of programming for *A Place in the Band: Women in Bluegrass and American Roots Music*. Hosted by North Carolina singer-songwriter Laurelyn Dossett, the interviews will focus on the backgrounds and experiences of women working in the music business, both as musicians and in other supporting roles. More information about the interviews, including release dates, will be announced through the e-newsletter and at BlueRidgeMusicCenter.org.

Thank you for supporting the Music Center through ticket purchases, donations, memberships, and sponsorships, which allowed the show to go on in a time when music lovers sought out safe and socially-distanced entertainment.

PROTECTING NATURAL RESOURCES

The Blue Ridge Parkway allows us to engage with the natural world in truly meaningful and inspiring ways. Each sweeping view encompasses a staggering diversity of flora and fauna playing critical roles in delicately balanced ecosystems. Your support safeguards this wild and wondrous place.

FUTURE CONSERVATION

Plant Nursery Feasibility Study

Within the bounds of the Blue Ridge Parkway, there are more than 1,400 types of vascular plants, making our national park unit one of the most diverse when it comes to flora. Many of these species make their homes in globally rare habitats found in the mountains, such as high-elevation grassy balds, rock outcrops, and spruce-fir forests. Even plants of the same species have genetic adaptations that can vary from the north end of the Parkway to the south. With the pressures of climate change and increasing numbers of visitors, not all of these plants are thriving, which can impact the entire ecosystem including pollinators and wildlife.

This summer, your support allowed the National Park Service to outline a proactive plan to help these plants flourish. Intern Marietta Shattelroe worked



with National Park Service Plant Ecologist Dr. Chris Ulrey to complete a feasibility study that laid out the priorities and projects for a native plant nursery designated for the Parkway. The possibilities include rejuvenating degraded habitats caused by erosion, bolstering rare plant populations, revegetation after construction and highway projects, and much more.

With this study, the National Park Service now holds an important tool to help protect the plant diversity that makes the Parkway a natural wonderland.

Pictured: Geum radiatum (left) and Liatris helleri (above) are endangered and threatened plant species native to the Blue Ridge Mountains.



VOLUNTEER SERVICE

Top Honor

In last year's annual report, we spotlighted Virginia Ward for her work with Parkway staff to protect native plant species in the park. This year, her dedication was recognized with the 2019 National Youth Award as part of the George and Helen Hartzog Awards for Outstanding Volunteer Service, an annual recognition of volunteer excellence in the National Park Service. This award celebrates outstanding service performed by a volunteer younger than 18.

Ward, a 15-year-old from Fairview, North Carolina, holds a deep love and respect for the wild places tucked amongst the craggy rock outcroppings along the Parkway. She has been volunteering with the Blue Ridge Parkway for three years where she assists the park's plant ecologist, Dr. Chris Ulrey, with monitoring critically imperiled plant species.

"In my 21 years with the National Park Service, I have not encountered a young person that so inspired and filled me with hope about the future," Ulrey said. "Ward's assistance has been a welcome gift to the rare plant program on the Parkway, making it possible to complete the important monitoring work more safely and efficiently." Congratulations, Virginia!



Virginia Ward received the National Park Service's highest honor for youth volunteer work.

ONGOING EFFORT

Great Gardens

Volunteers put their green thumbs to use beautifying the grounds at Moses H. Cone Memorial Park during two training days. At one session, they learned to operate string trimmers and helped clear the Figure Eight Trail near Flat Top Manor.

In another, the hydrangea gardens at Bass Lake received much needed TLC after the volunteers were taught to properly prune and care for the plants. The group cut back dead wood and discussed how to trim them in the spring so that these 100-year-old specimens will remain healthy and full of blooms.



To give your time to improving the Parkway, visit BRPFoundation.org/volunteer.

EVENTS

FIRST ANNUAL

Blue Ridge Parkway Masters Fly Fishing Tournament

Anglers cast their lines in private trophy waters for the first Blue Ridge Parkway Masters Fly Fishing Tournament on September 24, 2020, near Boone, North Carolina. The event, hosted by guides with Chetola Resort Orvis Endorsed Fly Fishing Lodge, was a fun outdoor adventure in support of the Parkway. The winners were:

1st Place: David Moore with a rainbow trout measuring 28 inches

2nd Place: Jan Waters with a rainbow trout measuring 26.5 inches

3rd Place: Dewey Wells with a rainbow trout measuring 22.5 inches

Most fish caught: Paul Bonesteel

A special thanks to the event's sponsors, Double Wood Farm and The Speckled Trout Restaurant and Bottle Shop.



1) Second place winner Jan Waters
2) First place winner David Moore shows off his catch



3) Paul Bonesteel releases one of his many catches.

PICK YOUR WAY TO GIVE

We invite you to explore these avenues of giving to sustain the Parkway for current and future generations.

Monthly Giving

As a Parkway Protector, you can support the Foundation's work year-round by making an automated monthly credit card payment of \$5 or more. (See the list of Parkway Protectors on page 21)

Tribute Gifts

A donation in honor or in memory of a loved one is a meaningful way to celebrate their connection to the Parkway or to commemorate a milestone such as a birthday, anniversary, or wedding. (See the list of 2019-2020 tribute gifts on page 19)

Beneficiary Designations

By naming the Foundation as a beneficiary in your will, 401(k), IRA, or life insurance policy, you will create an enduring legacy that protects the Parkway for many years to come.

Sample bequest language:

"I, [name], of [city, state, ZIP], give, devise, and bequeath to the Blue Ridge Parkway Foundation (Tax ID: 31-1512730), [written amount or percentage of the estate or description of property] for its unrestricted use and purpose."

Beneficiary information for IRAs, 401(k)s, and insurance policies:

Blue Ridge Parkway Foundation
717 S. Marshall St., Suite 105B
Winston-Salem, NC 27101
Tax ID: 31-1512730



Carolina Lily. Photo by A. Armstrong.

Workplace Giving



Contact your participating human resources office to give to the Foundation through EarthShare's Workplace Giving, the Combined Federal Campaign, or the N.C. State Employees Combined Campaign. Also ask if your company will match your gift!

Additional Opportunities

For more ways to give, including Donor Advised Funds, IRA Qualified Charitable Distributions (QCDs), and gifts of stock, contact development officers Jordan Calaway (jcalaway@brpfoundation.org) or George Ivey (givey@brpfoundation.org).

Give Now!

To make a gift right away, please visit BRPFoundation.org/donate or text PARKWAY to (833) 705-1234 and follow the prompts. Thank you!

This year, the Foundation earned a GuideStar Platinum Seal for transparency. To learn more, visit learn.guidestar.org/seals.

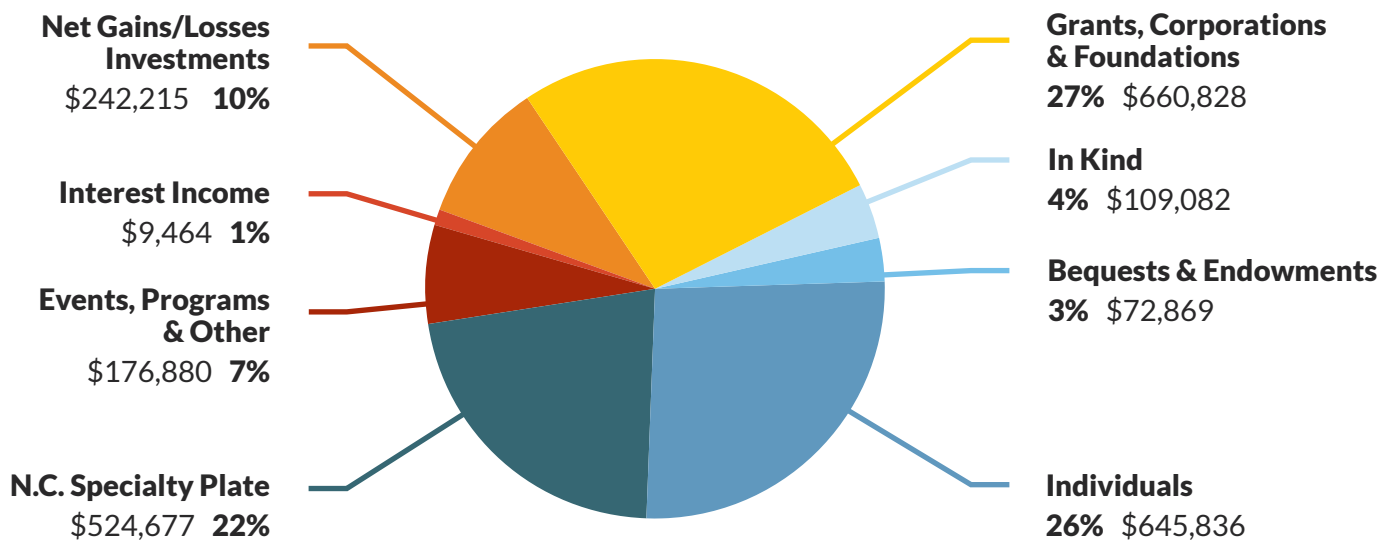


FINANCIALS

PUBLIC SUPPORT & REVENUE	2019	2018
Contributions	\$1,078,496	\$1,343,784
Grants	\$293,180	\$78,000
In Kind	\$109,082	\$89,991
N.C. Specialty Plate	\$524,677	\$521,904
Endowment Income	\$7,857	\$25,664
Interest Income	\$9,464	\$9,097
Other	\$176,880	\$300,202
Net Gains (Losses) Investments	\$242,215	(\$97,279)
Total Support & Revenue	\$2,441,851	\$2,271,363

EXPENSES	2019	2018
Program Services	\$1,992,601	\$1,565,321
Management & General	\$154,430	\$84,395
Fundraising	\$350,086	\$256,581
Total Expenses	\$2,497,117	\$1,906,297
Change in Net Assets	(\$55,266)	\$365,066
Net Assets at Beginning of Year	\$5,036,784	\$4,671,718
Net Assets at End of Year	\$4,981,518	\$5,036,784

Support: \$2,441,851



Financial information is derived from the Blue Ridge Parkway Foundation's 2019 financial statements, audited by an independent registered public accounting firm, and is available on our 990 and at brpfoundation.org/financials.

COMMUNITY OF STEWARDS

The Blue Ridge Parkway Foundation is thankful for the individuals, businesses, foundations, and partners who contribute to the safekeeping of the Blue Ridge Parkway. Donors who contributed \$250 or more between January 1, 2019, and December 31, 2019, are acknowledged on the following pages. They form a Community of Stewards that is truly committed to preserving and protecting the scenic route today and forever.

Foundations

AmazonSmile Foundation
George T. Baker Foundation
Bank of America Charitable Foundation
William S. Barnickel Foundation
Benevity/American Online Giving Foundation
Frederick Bliss Foundation
Blowing Rock Charity Horse Show Foundation
Blue Cross and Blue Shield of North Carolina Foundation
BlueCross® BlueShield® of South Carolina Foundation
Page and George Bradham Family Foundation
The Brady Foundation
David Belk Cannon Foundation
Chatham Foundation
Community Foundation of Greater Greensboro
Community Foundation of Western North Carolina
Considering Animals Fund
John Crosland III Charitable Foundation
Dominion Energy Charitable Foundation
Duke Energy Foundation
ExxonMobil Foundation
Foundation for the Carolinas
General Electric Foundation
John W. and Anna H. Hanes Foundation
IBM Foundation
Jewish Foundation of Greensboro
W. Klopman Family Foundation
Kulynych Family Foundation I
Kulynych Family Foundation II
Ebert-LeBlanc Family Foundation
Longleaf Foundation
Morningstar Foundation
National Park Foundation

RCL Fund of the Greater Cincinnati Foundation
Storey Family Charitable Gift Fund
The Surtman Foundation
Willow Branch Foundation
Ken and Deborah Wilson Foundation
The Winston-Salem Foundation

Businesses

Accenture
Allegra Marketing & Print Solutions
America's National Parks
Barringer Construction
The Biltmore Company
Bistro Roca
BlackBird Frame & Art, LLC
The Blowing Rock
Booneshine Brewing
Briar Patch Marketplace & Café
Burial Beer Co.
Canteen Market & Bistro
Canvas Beauty Bar
Carriage House Inn
Catawba Brewing
Chetola Resort at Blowing Rock
Chimney Rock Company
CoBo Sushi Bistro & Bar
Joan Collins Realty
Cone Health
Deep Creek Photography
Delaware North-Peaks of Otter Lodge
Emerging Technologies
Eurosport Asheville
First Citizens Bank
Floyd Country Store
Footsloggers
The Galax Smokehouse
J. Scott Graham Photography
Grandfather Mountain
Great Outdoor Provision Co.

Indera Mills
Mast General Store
Meadowbrook Inn
Modern Automotive Network
Mountaineer Inn & Log Cabins
Mule Hell Trading
New River Trail Cabins
Patagonia, Inc.
Pennington Biomedical Research Center
Ray's Weather
Rockydale Quarries Corporation
The Rosemyr Corporation
Sunset & Vine
Thirsty Monk
Triad City Beat
WBRF: Classic Country 98.1
The Law Offices of Timothy D. Welborn
Wicked Weed
Winston-Salem Journal
W.L.A. Trucking
Wooden Robot Brewery
ZAP Fitness

Community Partners

88.5 WFDD-Public Radio for the Piedmont
Appalachian Regional Commission
Birthplace of Country Music
Blowing Rock Chamber of Commerce
Blowing Rock Historical Society
Blowing Rock Tourism Development Authority
The Town of Blowing Rock
Blue Ridge Hiking Club
Blue Ridge Institute & Museum
Blue Ridge National Heritage Area

Blue Ridge Parkway Association
The Crooked Road: Virginia's Heritage Music Trail
EarthShare of North Carolina
Garden Club of Weaverville
Grayson County Tourism
Henderson County Tourism Development Authority
HoustonFest
National Council for the Traditional Arts
National Endowment for the Arts
North Carolina Department of Natural & Cultural Resources
North Carolina Division of Motor Vehicles
Virginia Tourism Corporation
Visit Winston-Salem
Winston-Salem Symphony
Yadkin Arts Council

Endowments

James Erwin Asbury and Nesbitt Samuel Asbury Memorial Endowment
James L. and Pat Shore Clark
Elsbeth and James McClure Clarke
Alan and Sally Cone
Bud and Brenda Hilton
Imerys/K-T Clay Company
Petro Kulynych
Houck and K.B. Medford
Judy and Bill Watson
O. Bliss and Susan Williams
Bland and Ada Worley
ZAP Fitness

Individual Giving

\$20,000+

Anonymous (2)
Sally Cone
The Estate of Catherine
Frampton
N.C. BRPF License Plate Holders

\$10,000-\$19,999

Alfred & Beth Adams
Bob & Jean Alsup
Hal & Beth Carson
Pat Shore Clark
Janet Cone & Larry Imeson
Ken & Donna Lewis
Marcus Simpson & Marilyn
Westphal
Fred & Alice Stanback
Myles Standish & Shelley Crisp

\$5,000-\$9,999

Anonymous (2)
William Ammons
Catherine Chiles &
Pieter Joost Van Wattum
Mike & Lori Constantino
The Estate of Mabel Clark
Corpening
Cassidy, Virginia, Veronica, &
Harry J. Fleck
The Estate of Roy Gallagher, Jr.
George & Agnes Harvin
Jo Hennelly
Billie Brandon Howell
Jim & Ginger Kelly
The Pence Family
Peter & Zika Rea
William & Cathy Stone
Larry Weigel & Jayne Anderson

\$2,500-\$4,999

Anonymous
Dale Allison
Mike & Clarkie Brown
Carol & Lynn Hogue
Tramm & Sarah Hudson
Bob & Jane Lassiter
William & Susan Leonard
William & Susanne Lovelace
Gary & Sherri Loveland
Dyke & Deborah Messinger
David Myers
Floyd & Priscilla Myers
Jim Newlin & Silvie Granatelli
Lizzie Outerbridge
Dave & Julia Ralston
Walt & Sharon Smoski
Jerry & Genie Starnes
James Stephens & K. Ann Berry

Bob & Janet Stout
Kirby Werninck
Walter & Jean Wilkinson
Dr. Eric Wilsnack
Bruce & Luci Wright
Steve & Nancy Zuk

\$1,000-\$2,499

Anonymous (3)
Norman & Linda Aldridge
Becky Anderson
Chip & Judy Anderson
Bernard & Holly Arghiere
Carol Baird
Bill & Laura Barrier
Joe & Diane Bastian
Jack & Martha Betts
Chris & Amy Blazejowski
Hanes & Lida Boren
Larry Bradley
Peter & Susan Brockway
Palmer, Hailey, Lucy & Abby
Brown
Beverly & David Brunson
Robert Burgin
The Capps Family
Brian Carlton & Elizabeth
Sumpter
Ken & Christine Castelloe
Hudnall & Claire Christopher
David Clawson
Brenda & Dale Cline
John & Gina Cocklereece
Kerr & Tori Collins
Bob Drennan
Vernon & Mary Beth Duty
Dr. & Mrs. Stephen Erlandson
Larry & Joy Greenwalt
Larry & Barbara Griswold
Chris & Debbie Herbert
Bill & Dee Hilt
Mark & Marge Hoecker
Phyllis Holmgren
Susan & David Jamison
Maxine Johnson
Ed & Jane Isbey
Kathy Kueider
Scott & Deanna Lampe
Jane Ledbetter
LeRoy & Brenda Leiker
David & Susan Lennox
Donald & Sandra Leslie
Jud & Deborah Little
Les & Catherine Love
Anita H. Lupo
Bill & Rennie Maddux
Catherine Mauro
Diana & Mike McClinton
Warren McCormick
Jim & Deborah McDowall
Preston McKee & Shuly
Cawood

Buddy & Monica McSwain
Robert & Cama Merritt
Tom & Pam Metz
Andrew & Mari Miles
John & Ruth Ann Miller
Lee H. Minor
Janet Montgomery
Keith & Carol Naumann
Kenneth Nicks
Eric & Kristina Paltell
Larry Pearce
Tamara Potter & Joachim
Weickmann
David & Nancy Poythress
Christopher Puin
Bebe Purcell
Sam & Missy Rankin
David & Ann Raper
Robby & Kim Ray
John Rendleman
John & Maria Rich
Tom & Susan Ross
Walter & Sally Rugaber
Alex & Michelle Schenker
Alan & Sherrie Schork
James Schreiber
Judy Newton Scurry
Anne Seawell
Miriam Sexton
John Silance
George & Michelle Snead
Randall Sparger
Joyce Speas
Verner & Anna Stanley
Thomas Statnick
Margaret & C.L. "Curly" Stumb
Brian & Mimi Sturgell
Richard & Debbie Swartzel
Les & Julie Taylor
Bill & Cynthia Tessien
Claudia B. Thomas
Tim Thomas
Wayne & Lee Harper Vason
Edward Walker
Jeffery L. & Teresa Ward
Mike & Hannah Ward
Bill & Judy Watson
Rod & Bliss Watson
James & Paula Weant
Terry & Carolyn Wiley
Tracy & Barbara Wilkerson
John Williams
Rob Willis
Brad & Carole Wilson
J.D. & Janie Wilson
Carter Wittman
Ralph Womble & Ashley
Edwards
Tom & Candy Wood
Paul & Marilyn Woodall
Walter & Sally Rugaber
Witold & Shirley Siwanowicz

\$500-\$999

Anonymous (4)
Ricky & Sharon Adkins
Welborn & Patty Alexander
Ross Allen
Connie Amburn
Larry & Cristina Ammons
Gary Andersen &
Donalda Jones
Tom Bagley & Gail Greco
Tom & Melissa Bahleda
Jim & Linda Barber
Donald & Ashley Barnes
Peter & Jean Anne Barnes
Frank & Ran Bell
Cort & Lindsey Bennett
Alex & Anne Bernhardt
Carol & Bob Black
Teresa Blanc
Ray & Mary Boardman
Rick & Amy Boucher
Forest Britt
Bryan Brothers
Adrian Brown & Keith Flynn
Lou & Andrea Bruns
Jim & Patty Butler
Donald & Teresa B. Caine
Jon & Laura Calbert
David & Teresa Campbell
Jim & Linda Carlisle
Gail & G.W. Catron
Hobie & Addie-Lou Cawood
Trey & Scarlett Chanter
Howard Colby & Penny
Longhurst
Ceasar & Bettie Cone
Connie Cooper
Laura Crumpler & John Dowd
James & Cooper Davidson
Terry Davis & Gail Hyde
James & Shelia Deal
Leigh & Jennie Derby
Bill & Penny Dickason
Frank & Donna DiMario
Dan & Kay Donahue
Joe & Virginia Dulaney
Susan & Harvey Durham
Dean Edwards
Mark & LaVonda Everhart
Douglas Flint
William Fowler
Gene Gluchowski
Steven Grachan
Leslie Grubb
James & Barbara Harrell
Roger & Kate Henry
Kay & Rick Herndon
Lucrecia Herr
Marcus H. Hester
Richard & Mary Hill
Margaret Hilton
Michael Hobbs

James Hoer
John Horan
Caroline Howe & Ben Clapp
Doris Hull
Paula Hunt
Richard Ikenberry
Bill Jacobs & Susan Posey
T. Cooper James
The Jamesson Family
Pam & Fred Kahl
Ken Key
Susan Kirkland
Jacob & Angela Kirkman
George & Kristy Lampe
Jay Lathrop
Stan & Jennifer Lee
Ray & Jodi Lockwood
Sara Long
Beth Lotspeich
Rick Lotz
J. David & Doris Asbury
Luening
David Lyles
William & Martha Maddox
Larry Mallett
Tom & Cindy Matthews
Pat Mauldin
Courtney & Bo Mauzy
Tom & Cindy Matthews
A.J. & Barbara McClure
Lauren & Ryan McDowell
Dalton McMichael
Mike & Donna McNeil
Rob & Roey Mendel
Deb & Chuck Miller
Mark & Beth Miller
David & Maureen Moses
James Moyer
Parker & Deborah Myers
Arnold & Rosemary Nelson
Jonathan & Ever Owens
Robert Palmer
Woody & Bobbi Poor
Ken Randolph
Rebecca Reeve
Chip Register
Bob Richert
Joseph & Nancy Roy
Charlie Rust
Joan Savage
Mark Schuler
John Shore, III
Perry Simpson
Bill & Alice Sims
Laura Smith
Tom & Ellen Stover
Jim & Cantey Tanner
Susan Thomas
Rush & Doris Thompson
Paul & Annette Turner
Pam & Tim Vines
Patra & Ronny Wansley

Judith Weger
Peter & Ann Weigl
Dermot Whelehan
Karen & Gary Wiegner
Richard Williams
Janet Wilson
Patrick Woodie
Joseph Young
Michael & Linda F. Zagorac
Tom & Barb Zimmerman

\$250-\$499
Anonymous (5)
Carlton & Sue Adams
Michael Adams
John & Annie Ager
Robert & Amanda Anders
David & Paula Applegate
George & Grace Auten
Jenny & Clay Ballantine
William Baird
Robert & Dianne Baker
Fred & Susan Barbour

James Barefield
Michael & Grace Baucom
James Beach
Michael Beamer
Anne-Corinne Beaver &
Mike Mola
Patricia Beyer
Robert & Sally Billington
Lou & Sara Bissette
Robert Bolton, Jr.
Paul & Wyndy Bonesteel
Wendell Breland

The André Michaux Society

With a planned gift, you become a member of The André Michaux Society, which honors the French botanist and explorer who enlightened others about the natural wonders of the Blue Ridge mountains. Members receive a personalized certificate recognizing their dedication to the Blue Ridge Parkway. The members are:



THE ANDRÉ
MICHAUX
Society

Alfred & Beth Adams	Karl & Edwina Kleeman	Mary Shuford*
Becky Anderson	Tom & Darlene Knight	Gary & Lisa Stewart
Neal & Patrice Auspitz	Mary Roberta Linn*	Marellen & John Struhar
William Barr	Jack & Barbara Lockhart	Les & Julie Taylor
Ed Blair	Kim Long	Tim Thomas
Connie Boylan	Greg & Vickie Madison	Jim & Pat Toole
Chip Callaway	Greg McKnight	Vicki Troutman & Mary Tucker
Rodney & Debra Clark	Arnold & Rosemary Nelson	Bill & Judy Watson
Calvin & Gail Clayton	Linda & Mark Pasche	Cliff Watts
Mabel Clark Corpening*	Howard Pearson*	Valeria Watts*
George & Sandy Fisher	Bob & Rebecca Schwartz	Pam Westrick
Catherine Frampton*	Bernadette Scott	Martha & Albert Yount
Roy Gallagher Jr.*	Anne Seawell	
Mark & Marge Hoecker	Miriam Sexton	<i>*deceased</i>
Hana Karpisek		
Sarah Kinnear*		

If you have already named the Blue Ridge Parkway Foundation in your estate plan, please let us know, so we can officially welcome you to the group and send you a token of our appreciation. Contact Jordan Calaway at jcalaway@brpfoundation.org or (866) 308-2773, ext. 245.



"The reopening of The Bluffs Restaurant was serendipitous for the Fleck kids. Though we grew up in Charlotte, North Carolina, the Blue Ridge Parkway is our identity and Doughton Park is our home. After countless Saturday mornings of Dad piling us into the car, we remember and cherish all his campfire stories at the campgrounds, the long hikes through the rhododendron-lined trails, eating our weight in cobbler at the restaurant, and sneaking away to watch the sunset beside the lodge's outdoor fireplace.

So, despite the closing of both the lodge and restaurant, it was no wonder that after suddenly losing our father in the spring of 2019, all four of us had an instinctual calling back to Doughton Park. Finding out that our beloved kitchen may reopen, we knew we needed to be a part of its revival. It was just obvious that we needed to give back to the place that raised us. The memories we've made there are invaluable and the potential to carry our Doughton traditions into adulthood and allow other families to build similar experiences gives us insurmountable joy. But most importantly, we know that every time we dig into a well-deserved meal at The Bluffs, Dad will be right there with us at the table."

- Cassidy, Virginia, Veronica, & Harry J. Fleck

Scott Brewington
 Dan & Linda Brown
 Greg & Laura Brown
 Mary Brown
 Nancy Brown
 W. Edward & Cheryl Brown
 Mr. & Mrs. Steven Brueggeman
 Ken & Charlotte Bryant
 Jeff & Martha Butts
 Jan Cahill

Jordan & Clint Calaway
 Martha Canipe
 Betty Castor & Samuel Bell
 Campbell Cawood
 Gwynne Chadwick
 Ron & Gale Champion
 Roger & Martha Charles
 Chuck & Julie Clark
 William & Lynn Clark
 Steve & Rochelle Cohen

Victoria Colebank
 Betty & Benjamin Cone
 Sally Cone
 Terri Cooper
 Mike & Amy Copley
 Joe & Rena Creech
 Doug Cumming
 Allison & Ryan Danell
 James & Martha Dayvault
 Kadie Dean & Tom O'Brien
 Wayne DellaMaestra
 Robert & Nancy DeHart
 Virginia Dooley
 James Doughton
 Jim & Clara Duggins
 Finley Dula
 Steve & Janet Edwards
 Mr. & Mrs. William D. Elliot
 Miles & Millicent Elmore
 Rebecca & Richard Embrey
 Richard Emmett
 Erika Fant & Quinn Lundquist
 Anne Farmer
 Elizabeth Fenwick
 Ian Firth
 Elizabeth Fluck
 Georgianna Francis
 Phil Francis
 Don & Linda Frey
 Dr. Lawrence Friedman
 Marsha Fuller
 Richard & Polly Gambill
 Ray & Jane Garland
 Walter & Shelly Gassner
 John & Jane Gehring
 David & Helen Gelly
 Jean Gemienhardt
 Donald Gest
 Russell Gill
 George & Linda Gilleland
 Jennie Glock
 Al & Jeannette Gore
 Barbara Gottschalk & Jim Ulus
 B. Kelly & Meredith Graves
 Maurie Gray
 Judy Greene
 The Hallmark Family
 David & Angela Hamilton
 Neal & Jewel Hamlett
 Tom & Paula Harbin
 Sally Harding
 John S. & Kathy Harp
 Nancy Harris
 Scotti Harwood
 Robert Hess
 Lori & Mark Hiatt
 Mary Hinkle
 Richard Hodgkin
 Don Holland
 Wes Howard
 Paul & Susan Hubbard
 Sandy & Randal Huff

Sharon & James Hutchens
 Mike & Norma Jenson
 Douglas Joines
 Peter Jonas & Kathleen Anderson
 Eve Juliano
 Michael Jurkoc
 Milo & Hana Karpisek
 Chuck & Betsy Kelsey
 Charles King
 Dave & Gail Kinser
 Lelia Kirkman
 Amanda Kreger
 Ed Kyles
 Chuck & Laura Lampley
 Gary & Theresa Landwirth
 Timothy Larson
 Edgar & Nan Lawton
 Herbert & Lynn Lawton
 Matt & Lale Lovell
 Karen Marinelli
 David & Ariadne Marko
 Barry Martin
 Doug Matheson
 Vann & Alice Matthews
 Wendy May
 Melanie McCall
 Andy & Donna McClure
 Anne McKenzie
 Phil & Beverly McKinney
 Greg McKnight
 Sarah & Frank McLane
 John & Connie McLendon
 Janett McMillan
 Richard McNeil
 Scott & Faye Medley
 Paul & Marcia Meis
 Robert & Linda Metz
 Tamara Michael
 Jenny & Wayne Miller
 John & Stephanie Mitchell
 Ruth Moeller
 Ann Moore
 Sheri Moretz
 Stephen C. & Jane H. Motsinger
 Anna Nagy
 Peggy & Robert Neal
 Janet Nelson
 Charlotte & Miguel Nunez Wolfe
 Bradley & Diane Ogg
 Jennifer Overcash
 Landis & Ellen Patrick
 Betty Patton
 Bill & Julia Phipps
 Holly & Lou Pierce
 David Pitser
 Judith & James Poland
 Carl & Mary Porter
 John Porter
 Jack & Becky Porterfield
 Dennis & Marcia Quinn

PARKWAY CHAMPION

Thank you, Willa!

In June of 2020, the Blue Ridge Parkway Foundation family said a tearful goodbye to Willa Coffey Mays when she announced her well-deserved retirement. Willa was more than the Chief Development Officer for our organization; she was one of the Parkway's strongest advocates and friends.

For more than 10 years, Willa dedicated her expertise to raising awareness and funds to address the needs of the Parkway. She worked to ensure donors and volunteers were welcomed into our Community of Stewards and given leading roles in the future of the place they treasure. Her passion allowed her to envision a better Parkway. Her persistence brought so many important projects to fruition.

Whether you are enjoying a meal at The Bluffs Restaurant, hiking a well-maintained trail, spending the day at Moses H. Cone Memorial Park, or



Willa Mays and Carolyn Ward at Rough Ridge.

admiring the historical beauty of Mabry Mill, you are experiencing Willa's impact on this national park unit. We wish her many happy adventures making memories with her family on the Parkway.

Michael Rankin
Tom & Liz Redding
Fairfax & Ann Reynolds
Alexis Richards
Chris & Cathy Robbins
David & Karen Robertson
Fon & Mac Rogers
Kim Rogers
Bill & Julee Rose
Walter Rose, Jr.
Dan Salcich
Michael Sartisky
Harriette Saunders
Justin & Mary Schleibaum
Ray Sczudlo & Deborah Sams
Sczudlo
William & Anne Seaman
Laura Sharpe
Waid & Babbie Shelton
Bob & Brenda Shepherd
John & Deborah Sherrill
Ron & Paulette Sherrill
Rusty & Janet Sherrill
Dell & Rob Slack
Mary & Ron Smalley
Mike & Shari Smiley
Brian Smith
Bruce Smith
David Snow

Jeffrey & Cindy Soell
Linda Solomon & Robert
Udashen
Chris & Hope Squires
Elizabeth & Mike Stanforth
Joyce Staton
Mary Stewart
Gail & Nelson Storie
Paul & Joan Stuhr
Shirley Sturdivant
Catherine Summers
Judie Swain
Sandra & Dennis Terry
Claire Tiernan
Brenda Kay Myers Tillotson
David Trahan
Vicki Troutman & Mary Tucker
Richard & Susan Tumbleston
Jason Urroz & Jenny Ung Urroz
Claudia Van Essen
Tom & Elizabeth Vasiliauskas
Alexa Viets
Fred & Charlotte Voreh
Kirk Wagner
Anthony Walley
Gregory & Debby Warren
Robert & Diane Weaver
Tom Webb & Kathryn Heath
Peter & Ann Weigl

Sally & Ron Wenda
Anne & David Whisnant
Stanley Wilch
Pam Willard
Dan & Jan Williams
Thomas Williams
Allen Wilson
Cynthia Wilson
Mike & Tanya Wilson
James & Linda Yaeger
Al & Barbara Yurkshat
Frances & Emilio Zeller
Jim & Joyce Zellner
Suzanne Ziemke

**Blue Ridge Music Center
2019 Members**
Ross Allen
Dale Allison
George & Eleanor Bell
Danny Boyer
Ashley Edwards & Ralph
Womble
David Lynch
Deb & Chuck Miller
Ann Weaver
Barbara & Tracy Wilkerson

Honors

Those honored are listed in bold. Donors are listed below. (Gifts from October 1, 2019 - September 30, 2020)

Alfred Adams

Charles & Susan Hauser
John & Jill Rose
J.D. & Janie Wilson

All of the Blue Ridge Parkway volunteers

John Papovich

Rusty Allen

Barbara Cornett

Blythe Allman, Ben Erlandson

Dr. & Mrs. Stephen Erlandson

Guy & Beth Ammirati

Pam Willard

Justin, Carrie & Jeremy Andrews

Pat Andrews

Bob Appleyard

Vicki Troutman & Mary Tucker

Janet & Tom Bachmann

Vicki Troutman & Mary Tucker

Bettie Ball

Frank & Dixie Quinlan

Logan Ballesteros

Kathy Ballesteros

Blue Ridge Parkway Foundation

Bob Bamberg

Ed Bamberg

Donald Bantz

Cameron Bantz

Jim Barber

John Robbins

Rebecca Barnhardt

Tom & Megan Lawson

Giovanni Belamiza

Bruce Cockcroft

Joe & Wendy Bell

Joan Todd

Barbara & Hank Bethea

Vicki Troutman & Mary Tucker

Jack Betts

Scott Patterson

Bob

Michael Lobban

Arty Bolick

LaRay Mason

Bosco & Rudy

Catherine Mauro

Dr. & Mrs. Edwyn T. Bowen, Jr.

Martha Bowen Sarcone

Bob Boyd

Maurya Boyd

Bruce & Kelly Branson

Laura Williard

Nathan & Thomas Bryant

David & Miriam Bryant

Mike & Jo Campbell

Jeannie & Lawrence Caviness

Tim & Elizabeth Campbell

Vicki Troutman & Mary Tucker

Richard Carmichael

Mary Jane Carmichael

Mary Jane Carmichael & Reesa**Devers**

Sarah Jenkins

Caroline & Cameron

Claire & Grant Henry

Lou Carollo

Cam Collins & Jane Bramham

Steven Carr

Caroline Ray

Bill Carson

Sally & Ron Wenda

Julie Cashman

Sandy Townsend

Anne Cassebaum

Elke Ruggaber

Christine Castelloe

Carlton & Sue Adams

Anonymous

Ken & Christine Castelloe

Kerry Bova

Elsie Chambers

Anonymous

Erica & Aaron Church

Judy Newton Scurry

The Civilian Conservation Corps

Tom & Candy Wood

Lynn Clark

Charles & Isabel Ernst

Kenneth Coffey & Katherine**Billman**

Vicki Troutman & Mary Tucker

Mary Louise & Mike Corn

Diane & Jason Willeford

Mr. & Mrs. John Dancy

Vicki Troutman & Mary Tucker

John Dancy-Jones

Lily Dancy-Jones

Don Davies

Mignon Durham

Alison & Jeremy Davis

Justin & Carrie Andrews

Donald Davis

Harris Prevost

Jim & Pat Day

Hunter Day

Tim Deal

James Earnhardt

Sarah Dillon

Cynthia Dillon

Angela Harriss

Kate Dixon

Michael Bianco

Fritz & Bev Earle

Anonymous

Ginnie Easter

Joanna Easter

Ken & Cindy Easter

Joanna Easter

Ellen Easter

Robert Elgan

Ben Elgan

Whit Ellerman

Ernestine Morgan

Richard Emmett

Vicki Troutman & Mary Tucker

Gary Everhardt

Nancy & James Creel

Anne R. Farmer

Ronald Melton

Libba Feichter

Bob Appleyard

Broaddus Fitzpatrick

Brenda McDaniel & Rupert

Cutler

Mr. & Mrs. Broaddus Fitzpatrick

Helen Fitzpatrick

Margie Forrest

David & Miriam Bryant

Douglas Forsyth

Anonymous

Ms. Sammie Friday

John Tutwiler

Our grandchildren: Will, Hazel,**Luke & Emory**

William & Mary Garrison

Willard Gayheart

Helen F. Stocksdales

Diane O. Gentry

Terry Gentry

Tom & Catherine Gibson

Caryn Gibson

Linda Gilbert

Harold Gilbert

Wilma Gilbert

Anonymous

James Glock

Jennie Glock

Bill Gravlee

Anne Gravlee

Carroll Gray-Preston

Andrew Preston

Susan Gray

Robert Suber

Mary Jean Grose

Jonathan & Karen Kollar

Leslie Grubb

Vicki Troutman & Mary Tucker

Matt & Nancy Gustafson

Marc Gustafson

Eileen Gutierrez

Albert Gutierrez

Mary R. Guynn

Dan & Linda Brown

The Ham Family

Bill & Melissa Tankersley

Arleen Hanchey

C.S. Hanchey

Jane Hanes

Stephen C. & Jane H. Motsinger

Betty Harris

Anonymous

Russell Harris

Linda Kinsinger

Dianne & Tony Harrison

Vicki Troutman & Mary Tucker

Paula & Rowland Harrison

Vicki Troutman & Mary Tucker

Mike & Kim Hartsell

Gerald & Brenda Peedin

Ms. Mary Henderson

Madeline Allen

Sam Heughan

Clare McManus

Scott & Ruthie Hill

Anonymous

William Hinman

Joanne Hinman

Herb & Evelyn Hobbs

Jim Wightman

Laura Wilfong Holland

Melissa Benton

Robert A. Holmes

Anonymous

Mr. & Mrs. Mike Hooks

Sue Leon

W.R. Hooper

Lewis & Phyllis Phillips

Jay & Gerry Howard

Wes Howard

Pat Howington

Jeff Howington

Dr. Olson Huff

Robert & Rebecca Schwartz

Bob & Sarah Hunter

Bob Appleyard

Dave & Robbie Irvin

Julia Miley

George Ivey

Laura Ivey

Elizabeth Iwaoka

Robert Iwaoka

Robyn Jackson

Anonymous

Jask

Amber Denny

Lisa & Terry Jennings

Holly Gilliam

Murrell & Kathy Johnson

Ken & LaVerne Davis

Sam Johnson

Earl Johnson

Shane Johnson

Lani Hashimoto

Dad Joines

William Joines

Dr. Harley Jolley

John Hough

Jonathan, Julia & Patrick

Jennifer Freeman

Ed & Bettie Jones

Bob & Linda Snipes

Marc & Frances Jones

Donald & Ashley Barnes

David Justice

Kelly Justice

Patricia Keefe

Charles & Jennifer Carrington

Linda & Duncan Rose

Susan Russo Klein

Beth Russo

Josef Kripner

George Kripner

Ms. Jennifer Kuntz

Marc Richards

Betsy Kusenberg

Michael Garten

Mike Landa

Anonymous

Jessica Langdon

Edd Langdon

Carl Larson

Robert Larson

Bob Lassiter

Ann Mills Lassiter

Robert Lassiter, Jr.

Jack Leske

Les McCarthy

James D. Love

LuAnn & Joe Love



Marc Lehmann, in honor of our anniversary

Donna Machen

My girls, Rachel & Kathleen

Amir Malek

Louise & Pete Marks

Rick & Cecelia Marks

Dean Martin

Shelley Gibson

Mr. & Mrs. Ronald Mays

Alexis Richards

Willa Mays

Olson & Marylyn Huff

Rob & Roey Mendel

Lauren McDowell

Barringer Construction

Loy Barbre McGill

Paul McGill

John McGowan

Margaret & Mark McColl

Anne McKenzie

Jim & Barbara Scott

Robert McKenzie

Zachary McKenzie

Earl McMahan

Jake Gaston

Donna & Mike McNeil

Richard McNeil

June McNeil

Rick Brown & Carole Campbell-Brown

Dorothy Sinclair

David Memory

Vance Barron

Mildred

Larry & Susan Bergman

The Montague Family

Ben & Sally Bowen

Sue Holbrook Moore

Madison Moore

Barbara Morgan, Founder, Project Dignity of WNC

Tom Morgan

Mother Nature

Marlene Land

Valerie Murray

Jennie Glock

My Family

Ken Easter

Ellen Royster Myrick

Jane Clark Moorman

Drew Naylor

Kristen Kelly

David & Annette Newton

Judy Newton Scurry

Paul & Janet Newton

Judy Newton Scurry

Steve & Tami Newton

Judy Newton Scurry

Mike & Jeanne Odell

Debra & Jeff Coston

Parkway Protectors

By committing to a monthly donation, Parkway Protectors play an essential role in sustaining the Foundation's mission to protect the 469-mile scenic route. We hope that you will join this growing group of steadfast supporters. Your gift is where the Parkway's future begins.

Lewis Addison

Matthew Ameika

Ed Anderson

Mark Anderson &

Michelle Fitzgerald

Cynthia Billings

Daniel & Pamela

Bowden

Billy & Theresa Auld

Brockway

Margaret Burroughs

Ken & Christine

Castelloe

Kia Christopher

Terri Cooper

Amy & Mike Copley

Martin & Ginger Curry

Jim & Shelia Deal

Frank & Donna DiMario

Erika Fant & Quinn

Lundquist

Elizabeth Fenwick

Katelyn Ghelardini

Russell Gill

David & Hannah Gray

Maurie Gray

Allison Harrell

Billie Brandon Howell

Martha Jenkins

Michael & Catherine

Lamm

Rick Lotz

David & Ariadne Marko

Pat & Harold Miller

Paula Mitchell

Brock & Melanie Moore

David Peeples

Chip Register

Charles & Kathy Rose

Rusty & Janet Sherrill

Eva Snapp

John Speckhard

Sarah Stroud

Julie & Les Taylor

Richard & Susan

Tumbleston

Jason Urroz & Jenny

Ung Urroz

Skylar Whitmire

Dan & Jan Williams

To become a Parkway Protector, visit ParkwayProtector.org.

Emma Olsen

Stuart Reit

J. Frank Papovich

Suzanne Jones

All the park rangers who dedicate themselves to care about our precious natural treasures

Amit Tyagi

Parkway Employees

Amy & Rick Boucher

Linda & Mark Pasche

John Danforth

Billie Pavich

Jim & Elaine Wilson

Teresa Pennington

Melissa Trawick

Earl & Beth Philmon

Michelle Philmon

Nick Pickhard

Julie Burns

Nathan & Kelsey Poole

Rod Poole

Rod Poole

Judy Poole

Jack & Maddie Poor

Woody & Bobbi Poor

Jason Powell

Leigh Powell

Janet Pratt

Nancy & John Aiello

David Purnell

Jonathan Purnell

Brad Putnam

Shannon Putnam

Betty Raft

Margaret Champion

Sara Margaret, Jack, Will &

Lucy Ray

Drue Ray

Ray Family

Janice & Robert Ray

Josh Richard

Dale Allison

Adam Roades

Kris & Mike Roades

Mark Robbins-Penniman

Lindsay Campos

Elke Ruggaber

Anne Cassebaum

Joseph & Winifred Rush

Gene & Laura Beasley

Rox Russo

Gregg Russo

Mimi Sagar

Susan Sunflower

Tom, JoAnn & Jarrod Sams

Mary Stewart

Our grandchildren

R. Balfour & Emily Sartor

Mary & Jerry Schleibaum

Peggy Lenhart



"I went to the Blue Ridge Music Center courtesy of my local NPR station 88.5 WFDD and my ongoing support as a sustaining donor. I didn't realize how much I missed being out in the open air. My niece Ximara Speech and I enjoyed the music of Amythyst Kiah & Shay Martin Lovette. The staff and volunteers of the Blue Ridge Parkway Foundation did a great job with organizing social distancing, the food was delicious, and there was a wonderfully peaceful environment created. It was a great day and we both left the Music Center feeling rejuvenated!"

- Kindra Speech

Peter Schlosser

Sheila Schlosser

Jenny Sebley

Angie Kirby

Mr. & Mrs. Jim Shannonhouse

Patricia Carter

Linda Shelton

Mark Shelton

Donald Sherrill

Kim Sherrill

Fabio Simio

Kristine Slater

Abel Smalling

Curtis & Mary Smalling

Jody Smith

Alyson Smith

Paul Smith

Todd Stabley

Rob & Ann Smith

Vicki Troutman & Mary Tucker

Louise Snipes

Bob & Linda Snipes

Harvie Langhorne Spangler

Dorothy & Daniel Spangler

Stan & Mary Davie Speckhard

John Speckhard

Ann Stone

Jonathan Wallace

Joy Sutherland

Amelia Sutherland

Alex & Karen Taylor

Anonymous

Bill & Cynthia Tessien

Lisa Smith

Kathi Vaughan

Bob & Kay Timberlake

David & Meg Hinson

Sandy Townsend

Julie & Donald Cashman

All Trails & Views Forever

Workers

Ed & Jane Isbey

Vicki Troutman & Mary Tucker

Bob Appleyard

Leslie Grubb

Jeff Turner

Myron Greer

The Varmints - Jayla, Dylan & Willow

William Dixon

Betty Lou & Tommy Ward

Holly & Lou Pierce

Bethney Webb

Jane Opliger

Joyce Webb

Ethan Webb

Jane & Tommy Opliger

Shana Whitehead & Bill Heath

Deborah & John Sherrill

Hugh Willard

Pam Willard

Lee & Vicki Willard

Pam Willard

Andrew, Parker & Carson Willett

Anna Lou Schaberg

Rita Woodruff & Jay Woodruff

Louise Law

Chase A. Yurkshat

Al & Barbara Yurkshat

Zoe, Violet & Rhett

Nancy Grooms

James Erwin Asbury

The James Erwin Asbury and Nesbitte Samuel Asbury Memorial Fund

Nesbitte Samuel Asbury

The James Erwin Asbury and Nesbitte Samuel Asbury Memorial Fund

Gail Aucremanne

Robert Aucremanne

Dick & Jane Auld

Billy & Theresa Auld Brockway

Warren & Iris Austin

Steve & Janice Austin

Betsy Sparger Bailey

Randall Sparger III

Ken Ball

Frank & Dixie Quinlan

Brent C. Barrett, Jr.

Beth Wessell

Henry & Colleen Baxter

Ed & Sherree Menius

Bruce Beaudin

Mary Kilpatrick

Jack & Eleanor Benbow

David & Phyllis Benbow

Ruby Taylor Bennes

Marjorie & Jane Asher

Don Eugene Best

Pam & Bill Blanton

Leslie & Richard Boone

Walter Blanks

Diane Blanks

Robert L. Boulay

Paul Boulay

Robert O. Bradley

Larry Bradley

William J. Brame

Martha Brame

Fay Sutton Brantley

Erin Caulder

Virginia Hackworth

Richard Hodgkin

Page & Ed Klutz

Ken Bremer

Brian DeCann & Pamela

McCarrick

Henry & Betty Jean Britt

Forest Britt

Irene Hamm Brown

Evelyn Phipps & Charles Earp

James M. & Marguerite M. Brown

William & Clara Cox

Dylan Charles Bruns

Lou & Andrea Bruns

Sharon Buck

Dudley Buck, Jr.

Kevin Bulson

Sandra & Jeffry Bulson

Harold & Lucille Bumgarner

Brenda Moore

Memorials

Those memorialized are listed in bold. Donors are listed below. (Gifts from October 1, 2019-September 30, 2020)

Edward Abbuehl

William Abbuehl & Rose

Levering

Charlie & Xanie Adams

Chuck & Gayla Adams

John G. Adkins

Ricky & Sharon Adkins

Arthur Alexander

Alicia Gordon

Sharon L. Allen

Kimberly Johnson

Dr. & Mrs. William B. Alsup, Jr.

Bob & Jean Alsup

Walter Stephen Ameika, Sr.

Matthew Ameika

Ed Anderson

Becky Anderson

Christeena Joy Anderson

Ed Anderson

Teena Cathleen Anderson

Ed Anderson

William Apple

David & Donna Huckabee

Lawrence Ariail

Jane & Tommy Opliger

Anthony Arrigo

Alex & Sandi Garcia

Trails & Views Forever Founding Funders

In 2019, the Foundation launched the Trails & Views Forever program to repair and renew trails, overlooks, campgrounds, and picnic areas that grace the entire length of the Parkway. The effort kicked off with a \$300,000 matching grant challenge from an anonymous donor. You and hundreds more helped us reach that milestone!

The overall goal for Trails & Views Forever is \$3 million to be spent on projects over the next 5 to 10 years. Donors who designated a gift of \$1,000 or more are the program's Founding Funders. They received a limited edition patch and are listed on donor recognition boards along the Parkway. We'd like to thank the following individuals who became Founding Funders and all who contributed to the program.



Alfred & Beth Adams	Edward Emery	Kathy Kueider	Pete & Kay Ritcher
Bridgett Aguirre	Eurosport Asheville	Kulynych Family Foundation II	Ann & Chester Robertson
Norman & Linda Aldridge	Mark & LaVonda Everhart	George & Kristy Lampe	John & Jill Rose
Mary Allen	Thomas Fisher, III	Scott & Deanna Lampe	Tom & Susan Ross
Becky Anderson	Estate of Roy Gallagher, Jr.	Bob & Jane Lassiter	Joseph & Nancy Roy
Chip & Judy Anderson	John & Janet Garrett	Jane Ledbetter	Alan & Sherrie Schork
Anonymous	Sabrina Gibson	David Lewis	Edward Scott
Anonymous Trust	LaGena & Daniel Greene	Bob Livingston	Anne Seawell
Carol Baird	Wes Greene	Kim Long	Miriam Sexton
Baptist Emergency Department	Larry & Joy Greenwalt	Rick Lotz	Raleigh & Katie Shoemaker
Jim & Linda Barber	Neal & Jewel C. Hamlett	Joseph & Lu Ann Love	Marcus Simpson & Marilyn Westphal
Peter & Jean Anne Barnes	Karen Hammett	Anita H. Lupo	Witold & Shirley Siwanowicz
Bill & Laura Barrier	Hanna Foundation	Pat Mauldin	Kelly & Linda Skillett
Beth Bartholomew & Susan Hurrell	Karen Harding	Catherine Mauro	Sherwood & Eve Smith
Joe & Diane Bastian	Henderson County Tourism Development Authority	Diana & Mike McClinton	Randall Sparger
Larry Beamer & Deborah Haynes	Chris & Debbie Herbert	Warren McCormick	Fred & Alice Stanback
Jack & Martha Betts	David, Patricia, Charlie, and Doug Herbert	Lisa & Andrew McDougald	Jerry & Genie Starnes
Hanes & Lida Boren	Bill & Dee Hilt	Jim & Deborah McDowell	James Stephens & K. Ann Berry
Larry Bradley	Daniel Hilton	Tom & Pam Metz	Ray Stone
Martha Brame	Cheryl Hirth	Ruth Ann & John Miller	William & Cathy Stone
Mike & Clarkie Brown	Susanne Hite	Lee H. Minor	Bob & Janet Stout
Mark Buff	Rick Hodgins	Donna Mitchell	James & Kimberly Strong
David & Teresa Campbell	Carol & Lynn Hogue	Janet Montgomery	Les & Julie Taylor
Brian Carlton & Elizabeth Sumpter	Steve & Bridget Holcombe	David & Julie Moore	Bill & Cynthia Tessien
Julia Carpenter	Honeysuckle Court, LLC - Mehl, Boteler, & Almand	Morningstar Foundation	Claudia B. Thomas
David & Peggy Carr	Morgan & Jack Horner	Jim Newlin & Silvie Granatelli	Philip & Virginia Thomas
Hal & Beth Carson	Billie Brandon Howell	Adam & Connie Ortiz	Tim Thomas
W. Lee Carter, III	Richard Ikenberry	Lizzie Outerbridge	Arlene Edwards Thompson
Ken & Christine Castelloe	Joe & Gayle Intag	Eric & Diane Overcash	Sterling Vestal
Munroe & Becky Cobey	Ed & Jane Isbey	Eric & Kristina Paltell	Mike & Hannah Ward
Gay Coleman	Thorunn Ivey	Leslie Paul	Bill & Judy Watson
Janet Cone & Larry Imeson	Steve Johgart	Larry Pearce	Kirby Werninck
Shelley Crisp & Myles Standish	John W. and Anna H. Hanes Foundation	Teresa Pennington, T. Pennington Art Gallery	Terry & Carolyn Wiley
Martin & Ginger Curry	Maxine Johnson	Clifford & Bobbie Phillips	J. Tracy & Barbara Wilkerson
Terry Davis & Gail Hyde	Philip T. Johnson, DVM	Linda Phillips	John Williams
Leigh & Jennie Derby	Robert Jones	Woody & Bobbi Poor	Willow Branch Foundation
Ron & P. K. Donson	George Kegley	Christopher Puin	Brad & Carole Wilson
Elyn & Michael Dortch	Mary Kilpatrick	Barbara Quickel	Tom & Candy Wood
Mitchell & Polly Dunn	John Koenig	Rebecca Reeve	Bruce & Luci Wright
Susan & Harvey Durham		Lynda Healy-Rejkowski & Don Rejkowski	Michael & Linda Zagorac
		John Rendleman	Steve & Nancy Zuk



“We treasure Moses H. Cone Memorial Park and all that the estate has to offer. It is a wonderful resource for the community. That is why we support the preservation of the carriage trails and the historically significant Flat Top Manor.”

-Agnes & George Harvin, Cone Estate Stewards
(Pictured above on right, with their friends, Tom & Cindy Matthews.)

Jerry Burns
 Janice Burns
Hildegard Butler
 Janet Stewart
David L. Butts
 Catherine Summers
Roy Campbell, Jr.
 Frances Campbell
Warren & Dorothy Campbell
 David & Teresa Campbell
Robert & Louise Canipe
 Martha Canipe
Hubert A. & Gozeal M. Canter
 Ken & Carol Canter
Kevin Daniel Carlson
 Stephanie Carlson
Herb Carlton
 W. Gray Parks
Tony Cate
 Andrea Dunn
 Karen Harding

Jean Lentz
 Marshall & Debra White
Beloved dog, Friday
 Roger & Martha Charles
David William Childress
 Donna & Mark Storm
Chris
 Frederic Eno
Dean Church
 Dee Gray
John Michael Clanton
 Gerhard & Karin Kalmus
Stewart Coleman
 Gay Coleman
Mr. James Coman, III
 Carol & Bob Black
Martin Condon, III
 Anonymous
Alan Cone
 Betty & Benjamin Cone, Jr.
 Sally Cone

Moses H. Cone
 Betty & Benjamin Cone, Jr.
Robert & Aldonia Covington
 Cynthia Covington
Bud & Trudy Cox
 Martha Cox
Lona Mae Cox
 Sarah Boyer
 Larry Liddle
 Martha Ward
Margaret Becton Crumpler
 John & Lynette Parker
Kathy Crutchfield
 Brian Crutchfield
Claire Culbreath
 Don Holland
Harriet Carolyn Browning
Davant
 Linda Adams
 Nancy Allabastro
 Lety Atieh
 Steve & Susan Ayers
 Banner's Cabinets, Inc.
 Cammie Berger
 Barbara & Richard Bevington
 Boone Construction Co. Inc
 James Brooks
 Ann Browning
 John Carlson & Katy Thompson
 Janet Cone & Larry Imeson
 Ted & Marty Couch
 Jeanne Crane
 John & Anne Davis
 Susan & Harvey Durham
 James & Joyce Gibson
 Herman & Renee Godwin
 Debbie Guinn
 Juliana Henderson
 Marjory Holder
 Morgan & Jack Horner
 Billie Brandon Howell
 Keith & Kelly Koenig
 Anne McKenzie
 Jennifer Moffitt
 Maureen & David Moses
 Sandy & Tommy Rouse
 James Srebro, MD
 Joe Todd
 Anne & David Whisnant
 Bernd Winkelmann
Gary T. Davenport
 Joan Davenport
Bette Sue D. Davis
 Bill Davis
Ronald Davis
 Susie Davis
Juanita & Bob DeHart
 Robert & Nancy DeHart
Graham W. Denton, Jr.
 Anne Denton
Van & Caroline Dillon
 Thomas Dillon

Shirley Carney Downey
 Missy Cabaniss
 Carolyn Paschal
Paul Doyle
 Elizabeth Doyle
Irene & Peter Dughi
 Janice RuBino
Jo Duncan
 Grady Duncan
Mr. Parks Easter
 Ken & Cindy Easter
Steven R. Eberhardt
 Polly Eberhardt
June & Joe Eby
 Emily Eby
Ken Eder
 Susan Lambert
Caroline Elliot
 JoAnn Davis
George R. Epting
 Kathy & John Lindsay
David Marshall Ewing
 Jane Ledbetter
Charlie Fant
 Patty Fant
Betty J. Feamster
 Crawford Honeycutt
Henry H. Ferguson
 Sharon & James Hutchens
Paul A. Fields
 Jane Wolfe
Tom Fields
 Robert Stickley
Mr. & Mrs. Thomas C. Fisher, Jr.
 Thomas Fisher, III
Paul Jackson Fitzgerald
 Chas Fitzgerald
Harry Timothy Fleck
 Cassidy, Virginia, Veronica, &
 Harry J. Fleck
Tommie Fordham
 American Legion Riders,
 Post 135
Woodrow & Lena Foster
 Edward Scott
Mary Ann Foust
 Jacquelynn Allison
 Anonymous
 The Little Family
 The Rummel Family
Lynn C. Fox
 Katherine Cullinan
William & Hughlene Frank
 Susan & Harvey Durham
Finley Frazee
 Judy Morris
Babe & Billy Fuller
 Marsha Fuller
John Furnas
 Nancy Furnas

Robert Wyatt Furr

The Cassell Family
George & Carolyn Coleman
Marion Denniston
Rose & Ray Snidow

Charles Aaron Gabriel

Charles Gabriel

Mr. & Mrs. Sam Gant

Janet Gant

Ron Garber

Terry Ellen Garber

Mabel Garner

Kristy Bumgarner

Billy Thomas Glenn

Skylar Whitmire

Floyd & Almeta Norris Greene

Judy Greene

Arvella Greenwell

Linda & Thomas Dunlap

Taylor Griggs

Thomas Morris

Molly Lane Hall

Robert Lansing

Mildred Hamelink

Brian DeCann & Pamela

McCarrick

Chuck Hammersmith

Douglas Flint

James Frank Hammett, Jr.

Karen Hammett

Elbert & Nova Harman

Ann & Phillip Brookner

James H. Harper

Lovelda Harper

Mark & Mildred Harwell

Anita H. Lupo

Pam Hathcock

Michele Hathcock

Ted Hathcock, Jr.

Carol M. Henry

Evan Raskin

Landon Roberts Henry

Jennifer & Clay Ballantine

Field Coxe & Florence Henry

Lucy Coxe

Elizabeth Henry

Joe Henry

Joel & Shanda Henry

Leah Henry

Riley Henry

Roger & Kate Henry

Robert Hooe & Chelsey Barnes

Jocelyn Reese

Anne Roberts & Keith Kennedy

In Loving Memory of Dorothy**Wood Herbert**

David, Patricia, Charlie & Doug

Herbert

Lawrence L. Hester, Jr.

Bette Hester

Faye Hettiger Roberts

Kemilou Pomplun

Bruce & June Hicks

Penny Conners

Tim Hirschauer

Justin & Mary Schleibaum

Cheryl Hirth

Anonymous

Wilson Leroy Hite

Susanne Hite

Christine Hollar

Mallory Weeks

Jane Holliday

Linda Lonon

William O. Hooper**Land Management Specialist,****Blue Ridge Parkway**

Richard Hooper

Fran Hopman

Wayne Hopman

Doris Shelton Hopper

Sabrina Gibson

Rosemary Tysko Hornak

Martha Adams

Joe & Dorcas Epley

Barbara & Bruce Fraser

Raymond Hornak

Peter Lunt

Eva Snapp

Mark Edward Hufeisen

Linda Richardson

Ruth Ann Huff

Jimmie & Patricia Kyser

Mary Hull

Susan Moore

Michael H. Hunt

Paula Hunt

Susan Ingolia

John & Nancy Aiello

Bernice Irvin

Dorothy & Daniel Spangler

David P. Ivey

George & Laura Ivey

Thorunn Ivey

Charles R. Jackson

Anonymous

David Johnson

Maxine Johnson

Jettie Hendren Johnson

Vicky Moody

Jimmy Johnson

Stephen Stern

Kenneth Johnson

Judy Johnson-Paonessa

Kimberly Johnson

Marilyn Allen

Torrey & Alice Johnson

Jane La Tour

Mr. & Mrs. Paul Jones

Janet Gant

Mr. & Mrs. Sam Jones

Janet Gant

Kenneth Kaufman

Roger & Joyce McNeil



"We have been married for 52 years and the Blue Ridge Parkway has been an important part of our lives for all of that time. Even though for most of those years we lived just about an hour from the Parkway, going there always seemed like something of an escape to a different world.

We now have a home just off the Parkway and treasure the more concentrated time we spend there, never tiring of the view of Pilot, Sauratown, and Hanging Rock mountains. We are very gratified that the Blue Ridge Parkway Foundation exists and that we can make contributions to it that help preserve and improve the Parkway experience for generations yet to come."

- Bill and Cathy Stone

Patricia Hoover Kay

Marcia & Dick Aunspaugh

Barbara & Bob Bone

David Cleghorn

Rob & Mary Ellen Corbett

Rhonda Hazlett

Robert Hurt

Bill & Toni Jernigan

Suzan Ledford

Judith & Leon Lee

Joyce Lockman

Bob & Gayle Nichols

Providence Methodist Church

Radford High School

Class of 1954

Byron Herbert Reece Society

Rosalinda Ring

Douglas Towery

Louise Kidd

Jim & Rachel Smith

Glenn & Gertrude Killon

Jacqueline & Donald Brooks

Geraldine Kilpatrick

Michele Hathcock

Timothy D. Krumm

Cheryl Krumm

Roena & Pete Kulynych

Brenda Cline

Kulynych Family Foundation I

Kulynych Family Foundation II

Janice K. Story

Vera Lachmann

Marilyn Berkon

Jimmy W. Lambert

Susan Lambert

Gary Keith Laney

Debra Laney

Marianne Larson

General Electric Foundation

Carl Larson

Robert Larson

All Law Enforcement Officers**Who Lost Their Life**

Lt. Jesse Strange, Ret.

Blue Ridge Parkway Foundation

Bill & Blanche Lawless

Cesar & Sue Leon

Joyce Ledbetter

Cal Ledbetter

Joseph Ira Lee, Jr.

Jane Ledbetter

Aubrey Liles, Jr. "Bubba"

John & Martha Babinski

Pat Long

Ron Armstrong

In Loving Memory of Jacqueline**Hart Lookabill,****Beloved Wife & Mother**

LaGena Lookabill Greene

Lulu

Patricia Pasley

Irene Lyon

Darla Sturgill

Rooney Malcom

Elizabeth Cooke

Julie Trotter

Carlene Marion

Billy Marion

Hugh & Joyce Massengill

Lloyd Massengill

Jack Mathews

Warren McCormick

Hazel Mathis

Sara Carter

Bob Mauldin

Pat Mauldin

Cameron McCormick

Warren McCormick

Dick McKnight

Greg McKnight

Ed McLeod

Elizabeth McLeod

Thomas Craig McMillan

Janett McMillan

Becky DeLeo Meleney

Stephanie Carlson & Georgie
Standofer

James & Eulon Miles

Kelly & Sue Johnson

Charles Miller

Marilyn Berkon

Steven Mayer

Jan Stewart Miller

Anthony Verrecchio

Jean Joines Miller

Jane Miller

**Jessica Claire Shoemaker
Miller**

Kay Shoemaker

Junior Miller

John & Kim Gaal

Tim & Nancy Miller

Adam Wasch

William H. Mills

Richard Kirkwood

Frank Joseph Mitchell

Anne & David Whisnant

Bill Moesker

Providence Methodist
Church

Gov. Dan K. Moore, Sr. &**First Lady Jeanelle Moore**

Brock & Melanie Moore

Reggie Moore

Mike & Leanne Brendle

Darren Moose

Peggy Bumgarner

William "Frank" Morgan

Janet Hahn

Julian Morton

Donny & Pamela Lambeth

Kenneth & Theda Mundy

David & Teresa Campbell

Robert Murrish

Barbara Murrish

Donna Musser

Jack Musser

Bob Myers

Clarence & Nelda Goings

Tyler Scott Myers

Anonymous

Lisa Austin

Baptist Emergency

Department

C and T Equipment Co.

Champion-GD Sales Team

Cynthia Cole

Compressed Air Systems, Inc.

Jackson Crickenberger

Linda Croom

Sandi Falk

George Gentsch

Rhonda & Doug Glenn

Jamie & Warren Hartsook

Joan Huggins-Pfaff

Beth King

Randy & Connie Laster

Doris Loggins

Hugh & Betty Jo Motsinger

Rick & Chrisanna Motsinger

Kay Myers

Pee Dee Tank Co. of S.C.

Amanda Reyes

Jessica Rulo

Becky & Junior Sink

Charles, Vanessa, Michael &

Megan Surles

Michelle Vondera

Andrea & Matt Williams

Marisa Wright

Sherron Nash

Carey Marsh

Barbara Neal

Elaine Thielen

Dwight & Lou Nichols

Nan Van Hoy

Paul & Marie Nifong

Margaret & Gary Nifong

Patsy Norwood

Joseph & Nancy Roy

Paul & Virginia Nygren

Anonymous

Charles O'Berry

Carolyn O'Berry

Howard & Wave Olson

David & Phyllis Benbow

Don Osborne

Virginia Osborne

Patricia Osteen

Alisun & David Henion

Jim & JoAnne Murray

Jill Knight & Anne Shelly

Betty Jean Park

Jim & Dianne Park

Bayard Ross Parker

Sharon Parker

Dennis Oakey Parker

Paige Parker

Elizabeth Shelby Parker

John & Lynette Parker

Gene Parker

Richard & Betty Kelly

Steve Pascucelli

Cynthia & Alan Buchanan

Bob & Helen Paul

Leslie Paul

Raymond Pease

Bruce & Patricia Bethka

Sue Bernie

Karen Donatelli

David Drury

Laura Pease

The Summers Family

Liz & Peter Wright

Brooks Peeples

David Peeples

Green Penn

Matthew Anctil

Arthur Phillips

Barbara Phillips

Arthur Benbow Phillips

Clifford & Bobbie Phillips

Robert O. Phillips

Linda Phillips

**Beloved dog, Pig, who loved the
mountains**

Heather Gale

John Pilot

Tami Ramsey

Dr. William Ross Pitser

David Pitser

James Gregory Poole, Jr.

Sherwood & Eve Smith

Cody Pourciau

Andre & Andrea Pourciau

Ed Powell

Kathy Kueider

Steven Edward Prater

Lynda Flowe

Dr. Norris & Mrs. Kathryn Preyer

Janet Nelson

Joseph A. Priest

Gerald & Brenda Peedin

Matthew Puckett

Stephanie Puckett

Barry Quickel

Barbara Quickel

Strowd Raines

Roy & Cathy Clark

Carol Reilmann

Justin & Mary Schleibaum

Edith Reimann

Jane Johnston

Lee James Reynolds

Barbara Reynolds

Mary L. Richardson

Gordon Richardson

Alexander Robertson, Jr.

Nancy Forsyth Sykes

Chester M. Robertson

Susan & Mark Andrews

Anonymous

Joe & Karen Bearden

Lisa Gould

Jim & Alice Keighton

Deanna Moss

Ann Robertson

Ed Wilson

Frank & Elizabeth Robertson

David & Karen Robertson

Ethel & Robert Robinson

Merrily Robinson

Mr. & Mrs. Robert Rumley

Scott & Lisa Rumley

James Edward Rush

Mary Rush

Jason Rust

Charlie Rust

Sarah Jane Carpenter**Scarborough**

George Cauthen

Elizabeth Dorn

Elizabeth Jones

John & Harriett Moore

Diane Parzygnat

Ed & Sandra Poliakoff

Steven Schuster

Mary Anne Howard

Peggy Scott

Philip & Mary Martha McKinley

Jannie Sue Ham Severt

Jana Nethery

Clifford & Eileen Sexton

Miriam Sexton

J.R. Shew

Wayne & Rebecca Shew

**Bobby Shore, My Father and
Friend**

Anonymous

Mr. John Wade Shore, III

J. Pate & Beth Hutchens

Rex Sigmon

Lucinda Lundy

Sharon Lynn Silance

John Silance

Gene Sininger

Mike & Kris Roades

Corrine Faw Sink

David Sink

Joseph T. Sloane

Therese Sloane

Adger & Gretelle Smith

Anonymous

Craig Stephen Snider

Delilah Fortner

Michael Mayfield

Judy Shomaker

Edward & Laura Snowden

Sherry Hawkins

Margaret P. Somers

Albert Somers

Dennis Stanfield

Cindy Reavis

Paul & Jane Stephan

Susan & Paul Stephan

Bob Stevens

Susan & David Hart

Joel Bond Stevenson

David Gantt

Mary Hervig

Janice Holden

Denise Ifkovic

Carlisle & Becky Stevenson

Dennis Winner

H. Daniel Stillwell

Jean Stillwell

Richard Stokes**Assistant Superintendent,****Virginia Section**

Lillian Stokes

Mr. & Mrs. R.D. Stone

Ray Stone

Alvin Sturdivant, Jr.

Shirley Sturdivant

Thomas Sturgill

Darla Sturgill

Scott Sutelan

David & May Scott Sutelan

Tyson Swain

Judie Swain

Charles Swebston

Anonymous

Marvin J. Tabor, Jr.

Sonny & Harriett Allgood

Thomas & Nell Hartley

M. Christopher & Katherine

Stanley

Virginia Duffy Talbott

Emily Talbott

William Delbert Teem

Betty & Ronald Gill

Colin Thomas

Maurice & Pam Thomas

Angela Reeves

Neal Thomas

Dwight & Dacia Osborne

George & Kathryn Thompson

Jeffrey Thompson

Roy Thompson

Arlene Edwards Thompson

John Tiernan

Claire Tiernan

Carolyn B. Tipton

Mike & Frank Broujos

Elizabeth Lamb

Tom & Andrea Scheviak

Steven Toney

Julie Toney

Tate & Bo Turner

Gary & Mary Turner

Rick Vaughn

Dave & Gail Kinser

Marie Vickers

Frances Riley

Betty Lou Ward

Holly & Lou Pierce

Gary Allen Weade

Elizabeth Hobbs

Anne C. Webster

Mark & Meredith Indermaur

Eric Anderson Weigel

Larry Weigel & Jayne Anderson

Hubert & Dot Weir

Perry & Nancy Weir

Barry Werninck

Kirby Werninck

Karen Whelehan

Bill & Karen Tait

Richard Whisnart

Clarence & Nelda Goings

Helen White

Larry & Willa Behnkendorf

Clyde Raymond Widner

Becky Anderson

Kevin Brandt

Jordan & Clint Calaway

Richard Emmett

Billie Brandon Howell

George & Laura Ivey

Marianne Kovatch

Bob & Janet Stout

Willa Mays

Jason Urroz & Jenny Ung Urroz

Hugh D. Williams

Elizabeth Collins

Woody & Lisa Williams

Thomas Williams

Vivian Willis

Mike & Judi Hunter

Dr. Roger Wilsnack

Dr. Eric Wilsnack

Emory Lee Wilson II and Family

Lori & John Wilson

Robert Winters

Sharon Winters

Terry Wise

Gene & Marie Anne Daniels

John & Alicia Gaul

Martha Griffin

Joan Hemenway

Mary & Bud Kilby

Rebecca Kraai

Joan Martin & Pat Burgess

Frank & Jerri Mayberry

Suzanne & Shade Mecum

John & Kelly Merritt

Lois Plowman

David & Kathy Pruett

C. Brian Speas

Gail & Leo Theard

Mr. & Mrs. William B. Webb, Jr.

Tom & Velva Woollen

Scott Witty

Roger & Mary Cruser

Nancy P. Woods

Jon Woods

Mr. & Mrs. Bland Worley, Sr.

Pam Hollifield & Scott

Montgomery

Ann Worley Register

Sarah Zenoble

Frances Quay Dortch

Special Thanks to Our Plateholders!

The Blue Ridge Parkway is 469 miles of scenic views, wildlife, trails, picnic areas, campgrounds, history, culture, and memories. We are grateful to the more than 25,000 North Carolina drivers who show their support for the Parkway by purchasing or renewing their specialty license plate.

Purchasing the Blue Ridge Parkway license plate for your vehicle is a great way to give back. \$20 from each new or renewed plate supports the Foundation, with the remaining \$10 going to the N.C. Wildflower Program. Plates can be customized for an additional fee. For more information, or to order your plate, visit GetThePlate.org.





Front Cover: The Saddle Overlook, Milepost 168
Back Cover: Pounding Mill Overlook, Milepost 413.2
Photos by Jeremy Riffe